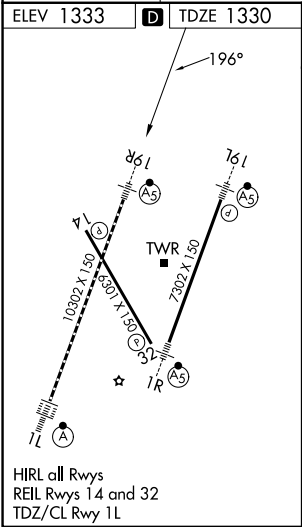
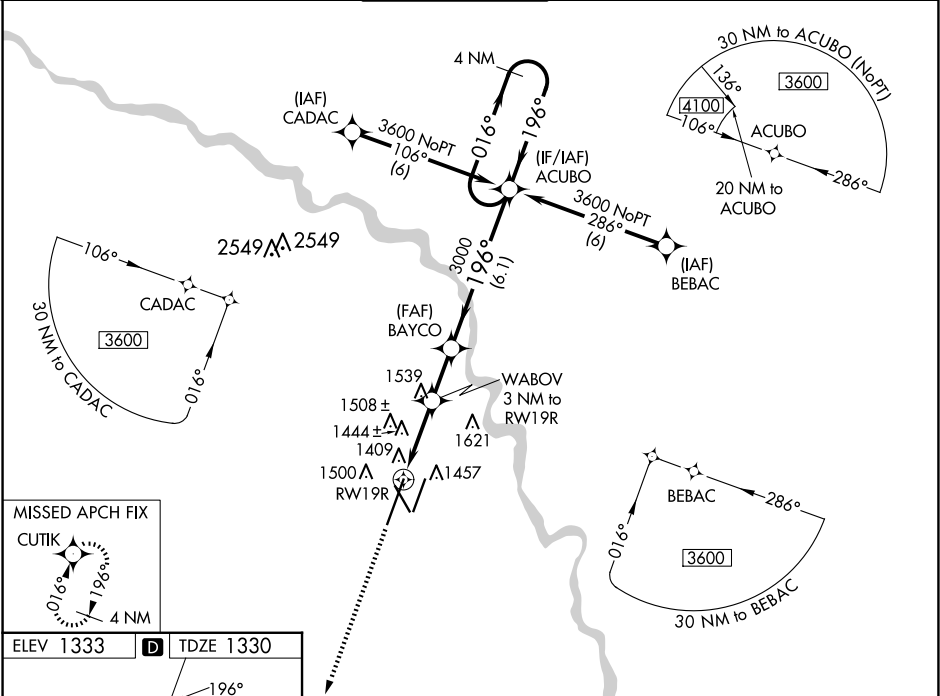


WAAS CH 63019 W19A	APP CRS 196°	Rwy Ldg 10302 TDZE 1330 Apt Elev 1333
--	------------------------	--

RNAV (GPS) Y RWY 19R
WICHITA DWIGHT D EISENHOWER NTL (ICT)

▼ For uncompensated Baro-VNAV systems, LNAV/VNAV NA below -15°C (5°F) or above 54°C (130°F). DME/DME RNP-0.3 NA. For inoperative MALSR, increase LNAV Cat C/D visibility to RVR 6000. # RVR 1800 authorized with use of FD or AP or HUD to DA.			MALSR 	MISSED APPROACH: Climb to 3600 direct CUTIK and hold.
ATIS 125.15	WICHITA APP CON 126.7 353.5	WICHITA TOWER 118.2 257.8	GND CON 121.9 348.6	CLNC DEL 125.7



ELEV 1333 D TDZE 1330		3600 CUTIK		ACUBO 4 NM Holding Pattern	
*LNAV only.		WABOV 3 NM to RW19R		BAYCO 3000	
*1.1 NM to RW19R		RW19R		3000	
1.1 NM		1.9 NM		2 NM	
CATEGORY		A		B	
LPV DA #		1530/24		200 (200-½)	
LNAV/VNAV DA		1742/45		412 (500-¾)	
LNAV MDA		1740/24		1740/40	
CIRCLING		1800-1		1980-1¾	
		467 (500-1)		647 (700-1¾)	
				1980-2	
				647 (700-2)	

NC-2, 10 JUL 2025 to 07 AUG 2025

NC-2, 10 JUL 2025 to 07 AUG 2025