

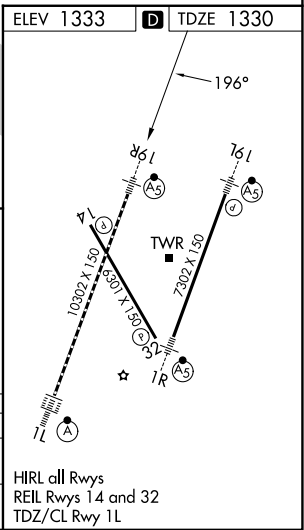
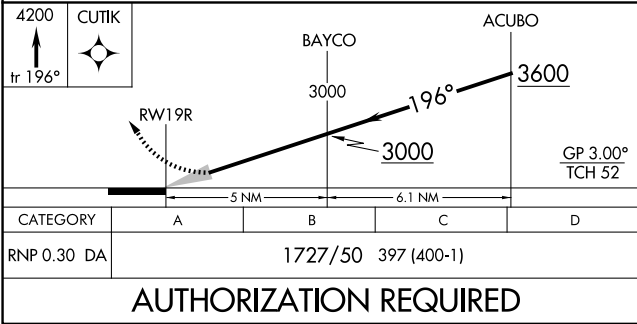
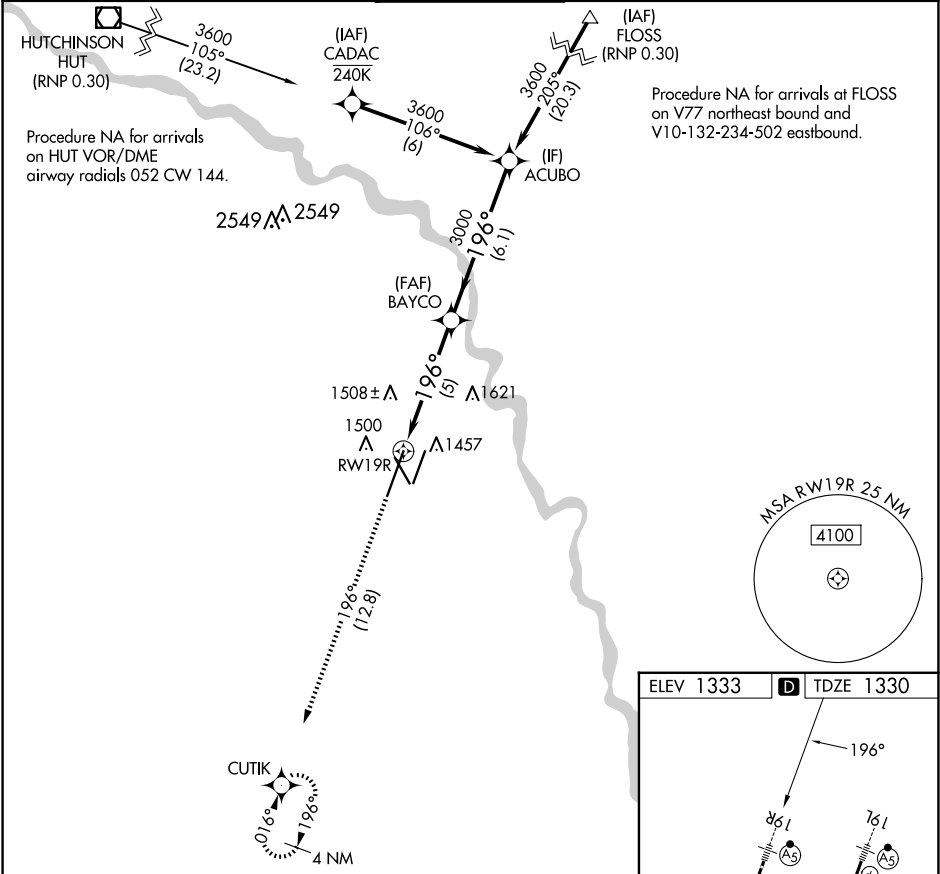
APP CRS	Rwy Ldg	10302
196°	TDZE	1330
	Apt Elev	1333

RNAV (RNP) Z RWY 19R

WICHITA DWIGHT D EISENHOWER NTL (IC'T)

<div><div>▼</div><div>For uncompensated Baro-VNAV systems, procedure NA below -15°C (5°F) or above 54°C (130°F). For inoperative MALS, increase all Cats visibility to 1 ¼ mile. GPS required.</div></div>	<div><div>MALS</div><div><div>AS</div><div><div></div><div></div><div></div></div></div></div>	<div>MISSED APPROACH: Climb to 4200 on track 196° to CUTIK and hold.</div>
--	--	--

ATIS 125.15	WICHITA APP CON 126.7 353.5	WICHITA TOWER 118.2 257.8	GND CON 121.9 348.6	CLNC DEL 125.7
----------------	--------------------------------	------------------------------	------------------------	-------------------



NC-2, 10 JUL 2025 to 07 AUG 2025

NC-2, 10 JUL 2025 to 07 AUG 2025