

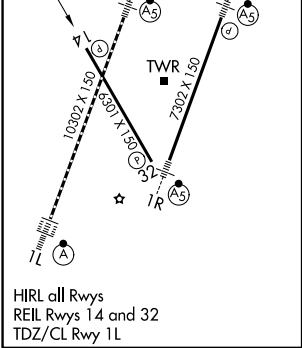
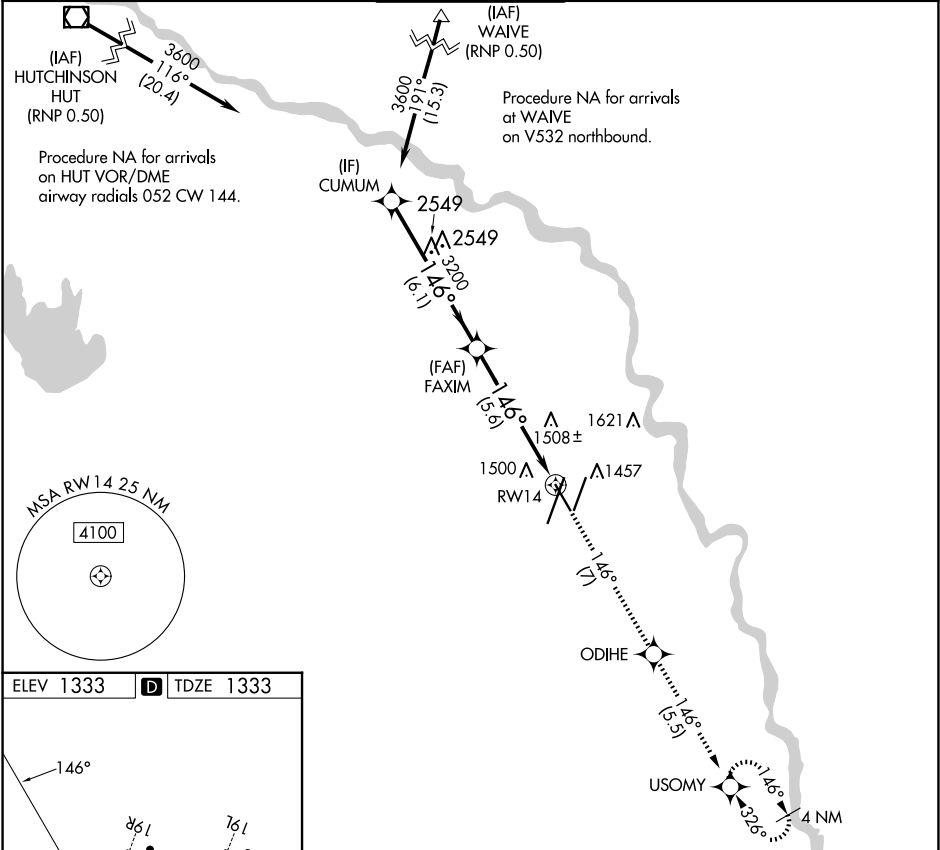
APP CRS	Rwy Ldg	6301
146°	TDZE	1333
	Apt Elev	1333

RNAV (RNP) Z RWY 14

WICHITA DWIGHT D EISENHOWER NTL (ICT)

<div><div></div><div>For uncompensated Baro-VNAV systems, procedure NA below -15°C (5°F) or above 54°C (130°F). GPS required.</div></div>	MISSED APPROACH: Climb to 3600 on track 146° to ODIHE and on track 146° to USOMY and hold.
--	--

ATIS 125.15	WICHITA APP CON 126.7 353.5	WICHITA TOWER 118.2 257.8	GND CON 121.9 348.6	CLNC DEL 125.7
----------------	--------------------------------	------------------------------	------------------------	-------------------



VGSI and RNAV glidepath not coincident (VGSI Angle 3.00/TCH 50).				3600 ↑ tr 146°		ODIHE ✧ tr 146°		USOMY ✧ tr 146°	
CUMUM		FAXIM							
3600		3200		3600		3200		RW14	
GP 3.00° TCH 50		3200		6.1 NM		5.6 NM			
CATEGORY		A		B		C		D	
RNP 0.11 DA		1682-1 3/8		349 (400-1 3/8)					
RNP 0.30 DA		1732-1 3/8		399 (400-1 3/8)					
AUTHORIZATION REQUIRED									