
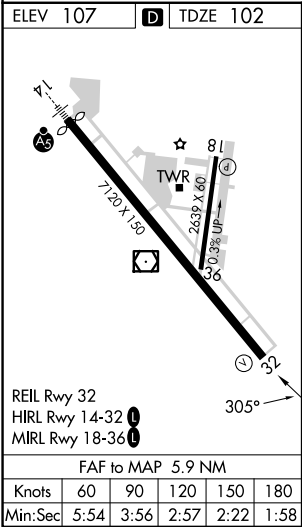
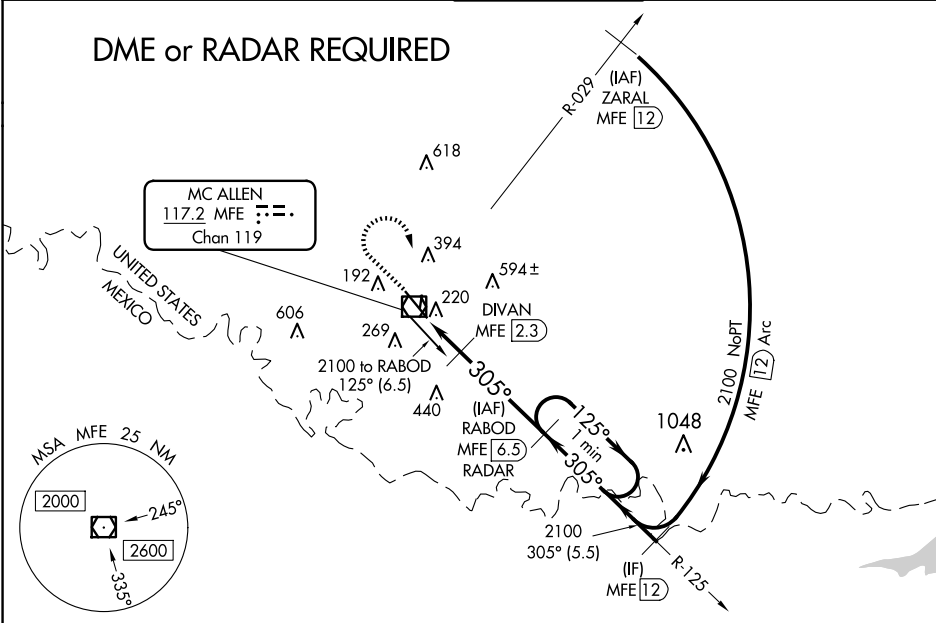


VOR/DME MFE <b>117.2</b> Chan <b>119</b>	APP CRS <b>305°</b>	Rwy Idg <b>7120</b> TDZE <b>102</b> Apt Elev <b>107</b>
--	------------------------	---

VOR RWY 32  
MC ALLEN INTL (MFE)

	Circling NA northeast of Rwy 14-32. When local altimeter setting not received, use Weslaco altimeter setting and increase all MDA 40 feet and S-32 Cat C/D and Circling Cat C visibility 1/8 mile, increase DIVAN Fix Minimums S-32 Cat C/D visibility 1/8 mile. VDP NA when using Weslaco altimeter setting.			MISSED APPROACH: Climb to 900 then climbing right turn to 2100 direct MFE VOR/DME.
	ATIS 128.5	VALLEY APP CON 126.55 377.2	MC ALLEN TOWER* 118.5 (CTAF) 256.9	GND CON 121.8



900	2100	MFE	RABOD MFE 6.5 RADAR	One Minute Holding Pattern
MFE VOR/DME	MFE 1.6	DIVAN MFE 2.3	125°	2100
MFE 0.6	305°	*660	3.09° TCH 52	*700 when using Weslaco altimeter setting.
1 NM	0.7 NM	4.2 NM		
CATEGORY	A	B	C	D
S-32	660-1	558 (600-1)	660-1½	558 (600-1½)
CIRCLING	660-1	553 (600-1)	660-1½ 553 (600-1½)	800-2¼ 693 (700-2¼)
DIVAN FIX MINIMUMS				
S-32	480-1	378 (400-1)		
CIRCLING	580-1	473 (500-1)	580-1½ 473 (500-1½)	800-2¼ 693 (700-2¼)

SC-3, 10 JUL 2025 to 07 AUG 2025

SC-3, 10 JUL 2025 to 07 AUG 2025