

VOR/DME MFE	APP CRS	Rwy Idg	6983
117.2	134°	TDZE	107
Chan 119		Apt Elev	107

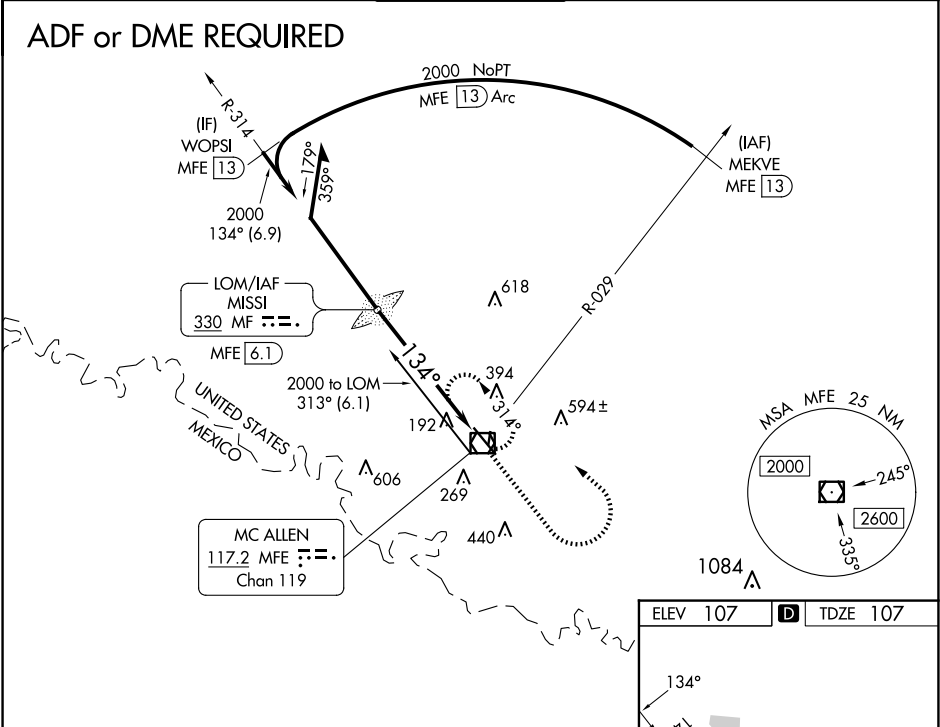
VOR RWY 14
MC ALLEN INTL (MFE)

⚠ Circling NA northeast of Rwy 14-32. ADF or DME required. For inop MALSR, increase S-14 Cat C/D visibility to 1½ mile. When local altimeter setting not received, use Weslaco altimeter setting and increase all MDA 40 feet and S-14 Cat C/D and Circling Cat C visibility ½ mile. VDP NA when using Weslaco altimeter setting.

MALSR

MISSED APPROACH: Climb to 1000 then climbing left turn to 2000 direct MFE VOR/DME and hold.

ATIS 128.5	VALLEY APP CON 126.55 377.2	MC ALLEN TOWER ★ 118.5 (CTAF) 0 256.9	GND CON 121.8	UNICOM 122.95
---------------	--------------------------------	--	------------------	------------------



Remain within 10 NM

MISSI MF LOM MFE 6.1

2000 134° 2000 314°

3.15° TCH 55

MFE 2.0 MFE 0.6

4.1 NM 1.4

1000 2000 MFE

REIL Rwy 32

HIRL Rwy 14-32

MIRL Rwy 18-36

FAF to MAP 5.5 NM

Knots	60	90	120	150	180
Min:Sec	5:30	3:40	2:45	2:12	1:50

CATEGORY	A	B	C	D
S-14	620-1 513 (600-1/2)		620-1 513 (600-1)	
CIRCLING	620-1 513 (600-1)		620-1 513 (600-1/2) 800-2 1/4 693 (700-2 1/4)	

SC-3, 10 JUL 2025 to 07 AUG 2025

SC-3, 10 JUL 2025 to 07 AUG 2025