

LOC/DME I-LLM 111.7 Chan 54	APP CRS 317°	Rwy Idg 7120 TDZE 102 Apt Elev 107
---	------------------------	---

ILS or LOC RWY 32
MC ALLEN INTL (MFE)


TA

Circling NA northeast of Rwy 14-32. ADF and DME or Radar required. When local altimeter setting not received, use Weslaco altimeter setting: increase all DA 39 feet and MDA 40 feet.

MISSED APPROACH: Climb to 2100 direct MF LOM and hold

ATIS
128.5

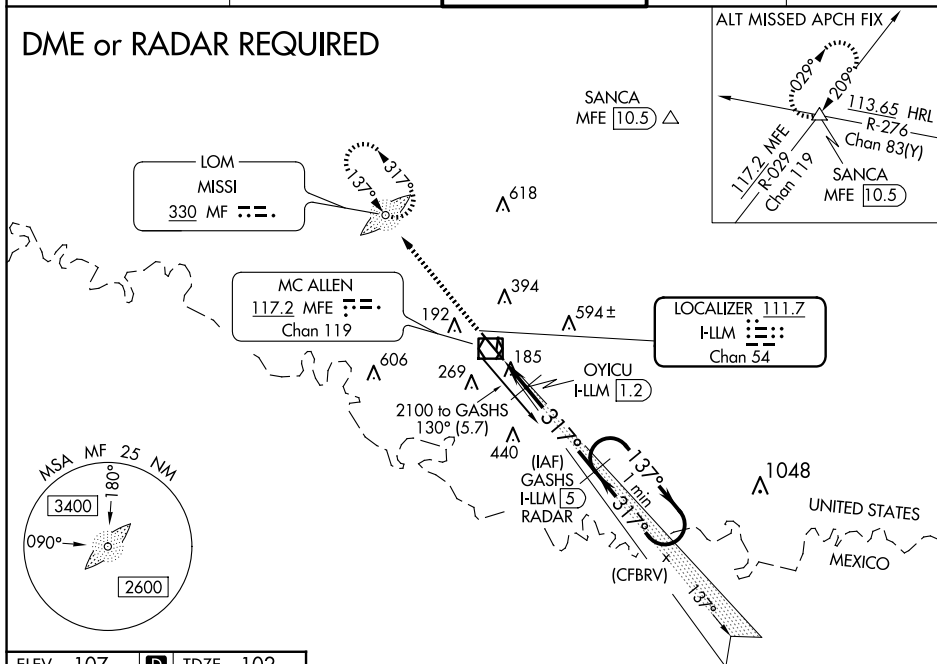
VALLEY APP CON
126.55 377.2

MC ALLEN TOWER ★
118.5 (CTAF)  256.9

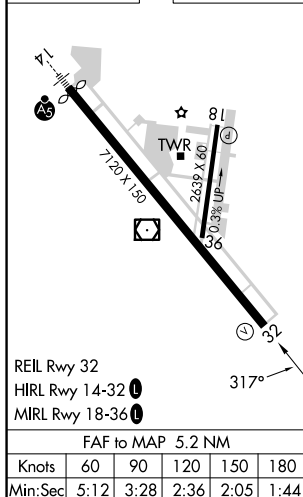
GND CON
121.8

UNICOM
122.95

DME or RADAR REQUIRED



ELEV 107	D	TDZE 102
----------	----------	----------



2100 MF

VGS and ILS glidepath not coincident (VGS Angle 3.00/TCH 53).

GASHS I-LM 1.2 RADAR

One Minute Holding Pattern

*LOC only

OYICU I-LM 1.2

1800

137°

2100

317°

1800

GS 3.00° TCH 50

*600 when using Weslaco alimeter setting.

CATEGORY	A	B	C	D
S-ILS 32	302- ³ / ₄ 200 (200- ³ / ₄)			
S-LOC 32	560-1	458 (500-1)	560-1 ³ / ₈	458 (500-1 ³ / ₈)
CIRCLING	580-1	473 (500-1)	580-1 ¹ / ₂ 473 (500-1 ¹ / ₂)	800-2 ¹ / ₄ 693 (700-2 ¹ / ₄)

OYICU FIX MINIMUMS

CATEGORY	A	B	C	D
S-LOC 32	440-1 338 (400-1)			
CIRCLING	580-1	473 (500-1)	580-1 ¹ / ₂ 473 (500-1 ¹ / ₂)	800-2 ¹ / ₄ 693 (700-2 ¹ / ₄)