
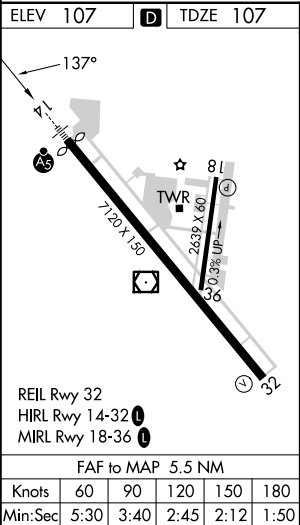
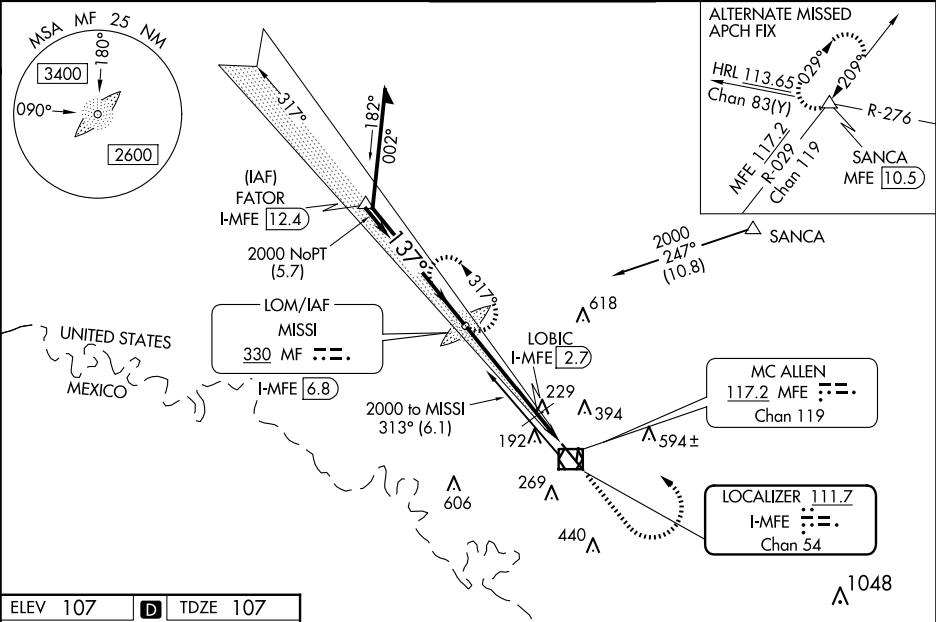


LOC/DME I-MFE 111.7 Chan 54	APP CRS 137°	Rwy Idg 6983 TDZE 107 Apt Elev 107
---	------------------------	---

ILS or LOC RWY 14
MC ALLEN INTL (MF'E)

ADF required. Circling NA northeast of Rwy 14-32. When local altimeter setting not received, use Weslaco altimeter setting: increase all DA 39 feet; increase all MDA 40 feet and S-LOC 14 Cat C/D and Circling Cat C visibility 1/8 mile, increase LOBIC Fix Minimums S-LOC 14 Cat C/D visibility 1/4 mile. For inop ALS, increase S-LOC 14 Cat C/D visibility to 1 3/8 SM. For inop ALS when using Weslaco altimeter setting, increase LOBIC Fix Minimums S-LOC 14 Cat C/D visibility to 1 3/8 SM.			<div>MALSR</div> <div></div>	MISSED APPROACH: Climb to 1500 then climbing left turn to 2000 direct to MISSI LOM and hold.
<div><div><div>▼</div><div>▲</div></div><div>ATIS 128.5</div></div>	<div>VALLEY APP CON 126.55 377.2</div>	<div>MC ALLEN TOWER ★ 118.5 (CTAF) 256.9</div>		



Remain within 10 NM

MISSI LOM/I-MFE 6.8

1500

2000

MF

*LOC only.

317°

137°

2000

GS 3.00° TCH 56



2000

*620

LOBIC I-MFE 2.7 I-MFE 1.3

4.1 NM

1.4 NM

CATEGORY	A	B	C	D
S-ILS 14	307-½ 200 (200-½)			
S-LOC 14	620-½	513 (600-½)	620-1	513 (600-1)
 CIRCLING	620-1	513 (600-1)	620-½ 513 (600-½)	800-2¼ 693 (700-2¼)
LOBIC FIX MINIMUMS				
S-LOC 14	540-½	433 (500-½)	540-¾	433 (500-¾)
 CIRCLING	580-1	473 (500-1)	580-½ 473 (500-½)	800-2¼ 693 (700-2¼)

SC-3, 10 JUL 2025 to 07 AUG 2025

SC-3, 10 JUL 2025 to 07 AUG 2025