

WAAS CH 56430 W06A	APP CRS 058°	Rwy Idg 6006 TDZE 186 Apt Elev 213
--	------------------------	---

RNAV (GPS) Z RWY 6
TRENTON MERCER (TTN)

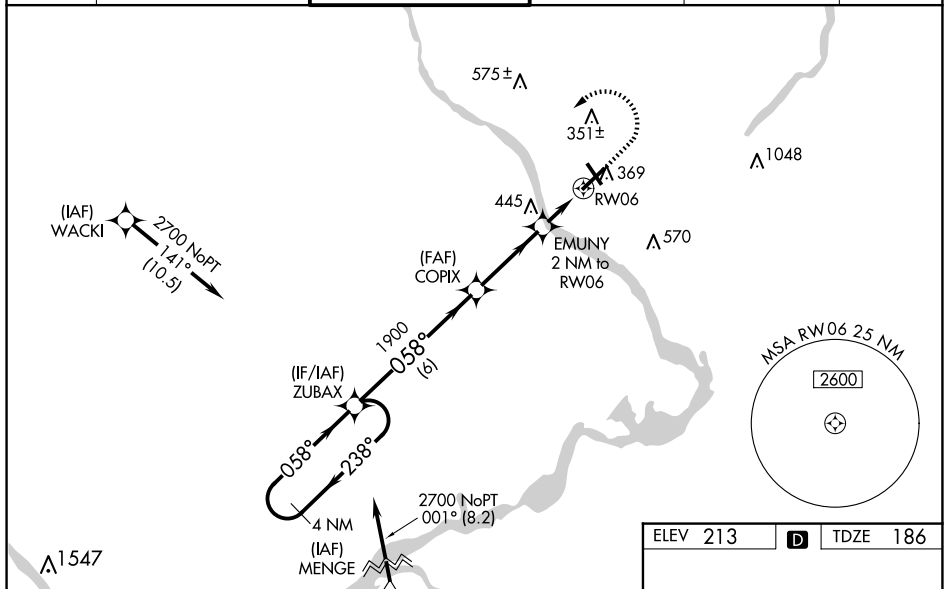
RNP APCH - GPS

V Baro-VNAV and VDP NA when using Northeast Philadelphia altimeter setting. For uncompensated Baro-VNAV systems, LNAV/VNAV NA below -13°C or above 54°C. When local altimeter setting not received, use Northeast Philadelphia altimeter setting and increase LPV DA to 437 feet; increase LNAV/VNAV DA to 658 feet and all visibilities ¼ SM; increase all MDAs 60 feet and LNAV visibility Cat C/D ¼ SM, and Circling visibility Cat C ¼ SM. For inop ALS, increase LNAV visibility Cats C/D to 1 ¼. For inop ALS when using Northeast Philadelphia altimeter setting, increase LNAV/VNAV all Cat DA visibility to 1 ¼ and LNAV visibility Cats C/D to 1 ¼. When Circling to RWY 34 at night, operational VGSI required, remain on or above VGSI glidepath until threshold.

MALSR

MISSED APPROACH:
Climb to 1500 then
climbing left turn to
2700 direct ZUBAX
and hold.

ATIS 126.775	PHILADELPHIA APP CON 123.8 291.7	TRENTON TOWER ★ 120.7 (CTAF) 0 257.8	GND CON 121.9 257.8	CLNC DEL 121.9 257.8	UNICOM 122.95
-----------------	-------------------------------------	---	------------------------	-------------------------	------------------



4 NM Holding Pattern

ZUBAX

COPIX

GP 3.00°
TCH 60

2700 ← 238°
← 058° →

1900

1900

*840

6 NM

3.3 NM

0.5

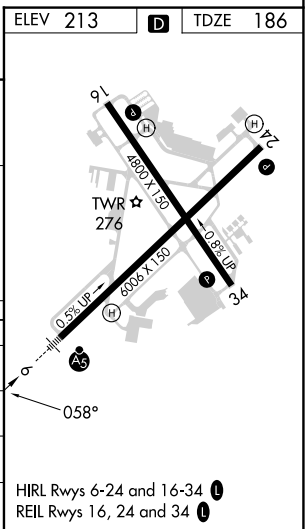
1.5 NM

EMUNY
2 NM to
RW06

*1.5 NM
to RW06

RW06

* LNAV only.



NE-2, 10 JUL 2025 to 07 AUG 2025

NE-2, 10 JUL 2025 to 07 AUG 2025