
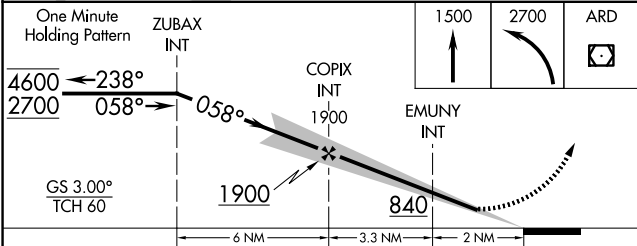
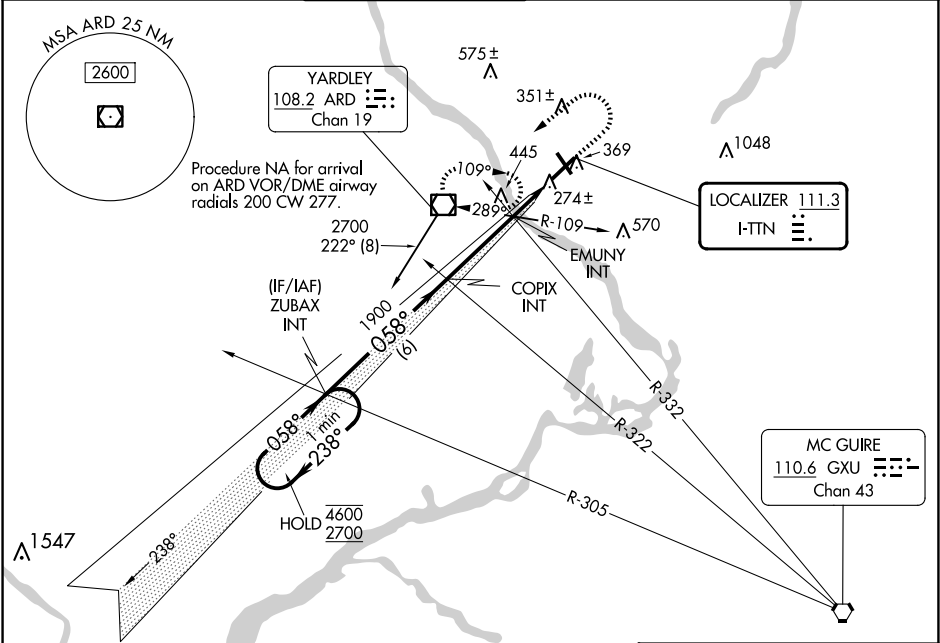


LOC I-TTN <b>111.3</b>	APP CRS <b>058°</b>	Rwy Idg TDZE <b>186</b> Apt Elev <b>213</b>
---------------------------	------------------------	---

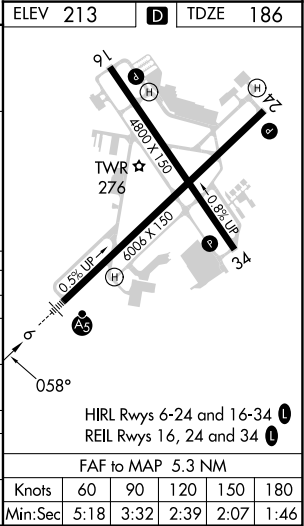
ILS or LOC RWY 6  
TRENTON MERCER (TTN)

<p>▼ When Circling to Rwy 34 at night, operational VGSI required, remain on or above VGSI glidepath until threshold. For inop ALS, increase EMUNY fix minimums S-LOC 6 Cat C/D visibility to 1 SM.</p> <p>▲</p>	<p>MALSR</p> 	<p>MISSED APPROACH: Climb to 1500 then climbing left turn to 2700 direct ARD VOR/DME and hold.</p>
---	--	--

ATIS <b>126.775</b>	PHILADELPHIA APP CON <b>123.8 291.7</b>	TRENTON TOWER ★ <b>120.7 (CTAF) 0 257.8</b>	GND CON <b>121.9 257.8</b>	CLNC DEL <b>121.9 257.8</b>	UNICOM <b>122.95</b>
------------------------	--	--	-------------------------------	--------------------------------	-------------------------



CATEGORY	A	B	C	D
S-ILS 6	414-½ 228 (300-½)			
S-LOC 6	840-½	654 (700-½)	840-1⅓	654 (700-1⅓)
◼ CIRCLING	840-1	627 (700-1)	840-1⅞	960-2½
EMUNY FIX MINIMUMS (DUAL VOR RECEIVERS REQUIRED)				
S-LOC 6	540-½	354 (400-½)	540-⅝	354 (400-⅝)
◼ CIRCLING	680-1	467 (500-1)	760-1½	960-2½
			547 (600-1½)	747 (800-2½)



NE-2, 10 JUL 2025 to 07 AUG 2025

NE-2, 10 JUL 2025 to 07 AUG 2025