

WAAS CH 62820 W05A	APP CRS 049°	Rwy Idg TDZE Apt Elev	5000 48 53
--	------------------------	-----------------------------	---------------------------------------

RNAV (GPS) RWY 5

SALISBURY-OCEAN CITY WICOMICO RGNL (SBY)

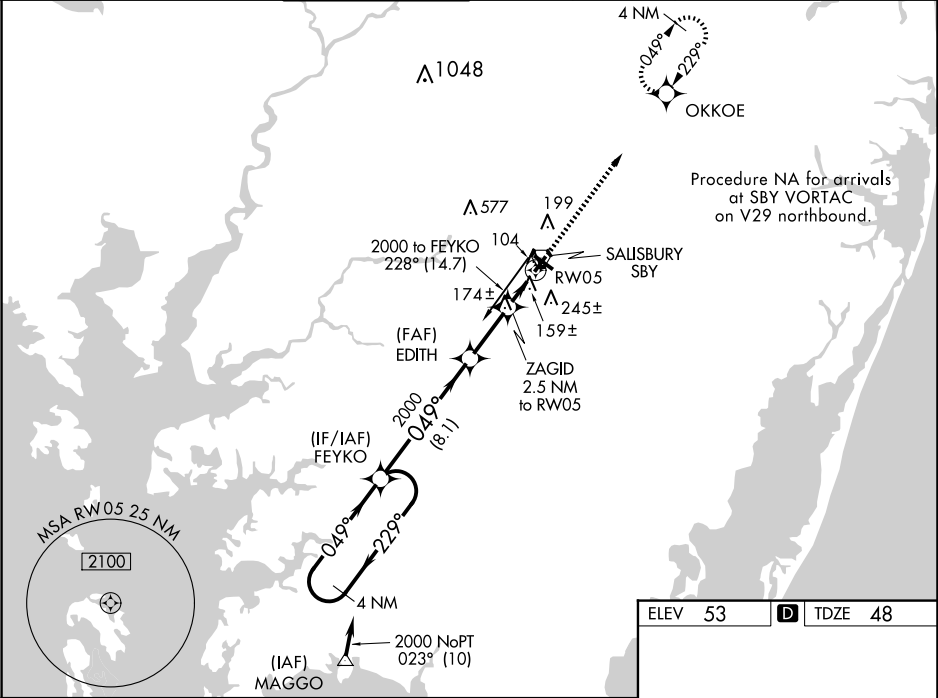
RNP APCH.

▼

Baro-VNAV NA when using Georgetown altimeter setting. For uncompensated Baro-VNAV systems, LNAV/VNAV NA below -15°C or above 49°C. Visibility reduction by helicopters NA. When local altimeter setting not received use Georgetown altimeter setting: increase LPV DA to 394 feet and increase all Cats visibility ¼ SM; increase LNAV/VNAV DA to 512 feet and all Cats visibility ¼ SM; increase all MDA 60 feet and LNAV Cat C/D and Circling Cat D visibility ¼ SM.

MISSED APPROACH: Climb to 2000 direct OKKOE and hold.

ASOS 118.325	PATUXENT APP CON ★ 127.95 314.0	SALISBURY TOWER ★ 119.425 (CTAF) 0	GND CON 123.775	CLNC DEL 123.775	CLNC DEL 132.45 (when twr closed)	UNICOM 122.95
------------------------	---	---	---------------------------	----------------------------	--	-------------------------



4 NM Holding Pattern		FEYKO	EDITH	ZAGID 2.5 NM to RW05	*LNAV only.	2000	OKKOE
2000 ← 229°		2000	2000	2000			
GP 3.00°							
TCH 39							
		8.1 NM	3.4 NM	2.5 NM			
CATEGORY	A	B	C	D			
LPV DA		342-1	294 (300-1)				
LNAV/VNAV DA		460-1½	412 (500-1½)				
LNAV MDA		440-1	392 (400-1)	440-1¼			
				392 (400-1¼)			
CIRCLING	480-1	520-1	560-1½	700-2			
	427 (500-1)	467 (500-1)	507 (600-1½)	647 (700-2)			

