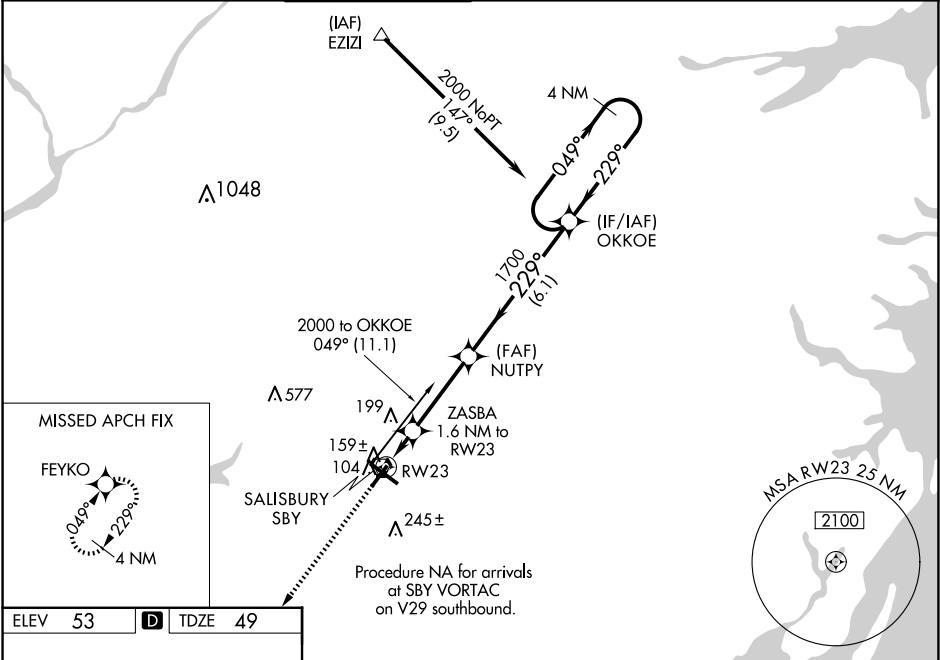


WAAS CH <b>78018</b> <b>W23A</b>	APP CRS <b>229°</b>	Rwy Idg TDZE Apt Elev	<b>5000</b> <b>49</b> <b>53</b>
--	------------------------	-----------------------------	---------------------------------------

RNAV (GPS) RWY 23

SALISBURY-OCEAN CITY WICOMICO RGNL (SBY)

RNP APCH						MISSED APPROACH: Climb to 2000 direct FEYKO and hold.
Baro-VNAV NA when using Georgetown altimeter setting. For uncompensated Baro-VNAV systems, ▼ LNAV/VNAV NA below -15°C or above 43°C. Rwy 23 helicopter visibility reduction below ¾ SM NA. ▲ When local altimeter setting not received use Georgetown altimeter setting: increase LPV DA to 426 feet and all Cats visibility ¼ SM; increase LNAV/VNAV DA to 503 feet; increase all MDA 60 feet and LNAV Cat C/D and Circling Cat D visibility ¼ SM.						
ASOS 118.325	PATUXENT APP CON ★ 127.95 314.0	SALISBURY TOWER ★ 119.425 (CTAF) 0	GND CON 123.775	CLNC DEL 123.775	CLNC DEL 132.45 (when twr closed)	



ELEV 53

D

TDZE 49

REIL Rwy 5, 14 and 23 **0**  
MIRL Rwy 5-23 **0**  
HIRL Rwy 14-32 **0**

2000 FEYKO		VGSI and RNAV glidepath not coincident (VGSI Angle 3.00/TCH 45).		4 NM Holding Pattern	
*LNAV only.		ZASBA 1.6 NM to RWY 23		NUTPY 1700	
RWY 23		*600		GP 3.00° TCH 51	
1.6		3.4 NM		6.1 NM	
CATEGORY	A	B	C	D	
LPV DA	374-1		325 (400-1)		
LNAV/VNAV DA	451-1½		402 (400-1½)		
LNAV MDA	420-1		371 (400-1)		420-1¼ 371 (400-1¼)
CIRCLING	480-1 427 (500-1)	520-1 467 (500-1)	560-1½ 507 (600-1½)	700-2 647 (700-2)	

NE-3, 10 JUL 2025 to 07 AUG 2025

NE-3, 10 JUL 2025 to 07 AUG 2025