

LOC I-SBY <u>108.7</u>	APP CRS 319°	Rwy Idg TDZE Apt Elev	6400 53 53
----------------------------------	------------------------	-----------------------------	---------------------------------------

ILS or LOC RWY 32

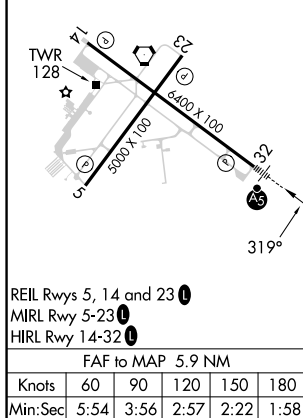
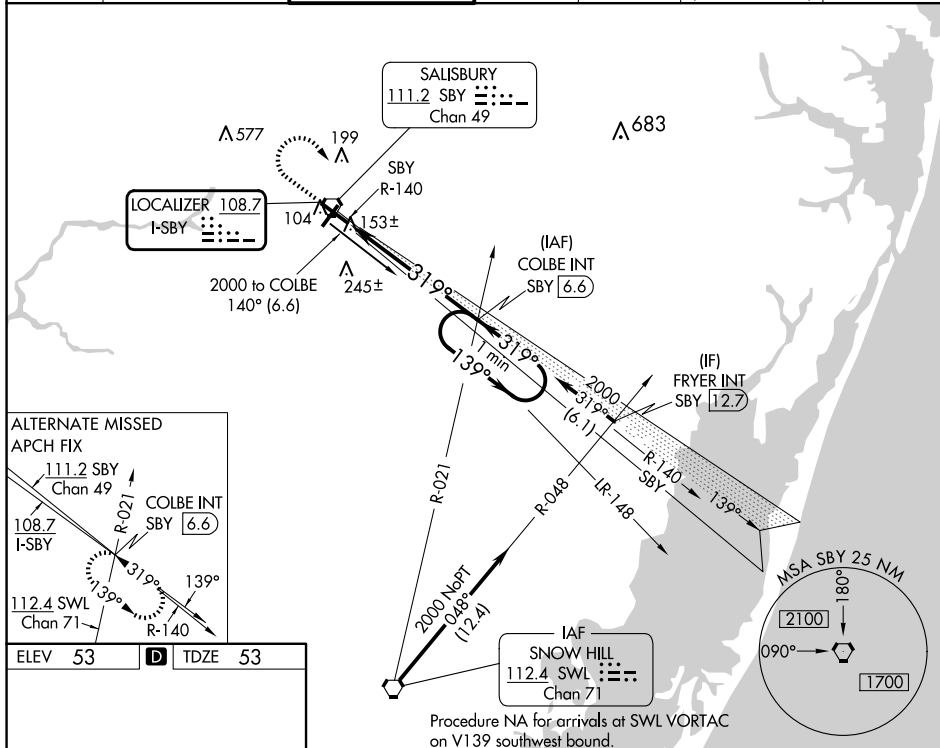
SALISBURY-OCEAN CITY WICOMICO RGNL (SBY)

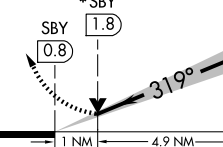
T When local altimeter setting not received, use Georgetown altimeter setting: increase DA to 305 feet; increase all MDA 60 feet and S-LOC 32 Cat C and Circling Cat D visibility $\frac{1}{4}$ SM.

MALSR

MISSED APPROACH: Climb to 700 then climbing right turn to 2000 on heading 170° and on SBY VORTAC R-140 to COLBE INT/SBY VORTAC 6.6 DME and hold.

ASOS 118.325	PATUXENT APP CON ★ 127.95 314.0	SALESBURY TOWER ★ 119.425 (CTAF) 0	GND CON 123.775	CLNC DEL 123.775	CLNC DEL 132.45 (when twr closed)	UNICOM 122.95
------------------------	---	--	---------------------------	----------------------------	--	-------------------------



700 ↑	2000 hdg R-140 170°	SBY R-140	COLBE INT	One Minute Holding Pattern			
*LOC only				COLBE INT SBY [6.6]			
				139° → ← 319° 2000 GS 3.00° TCH 54			
CATEGORY	A		B	C		D	
S-ILS 32	253-½ 200 (200-½)						
S-LOC 32	420-½ 367 (400-½)					420-¾ 367 (400-¾)	
CIRCLING	480-1 427 (500-1)	520-1 467 (500-1)	560-1½ 507 (600-1½)	700-2 647 (700-2)			