

WAAS CH <b>61015</b> <b>W06A</b>	APP CRS <b>063°</b>	Rwy Idg TDZE <b>1107</b> Apt Elev <b>1156</b>
--	------------------------	---

RNAV (GPS) RWY 6

FORT DODGE RGNL (FOD)

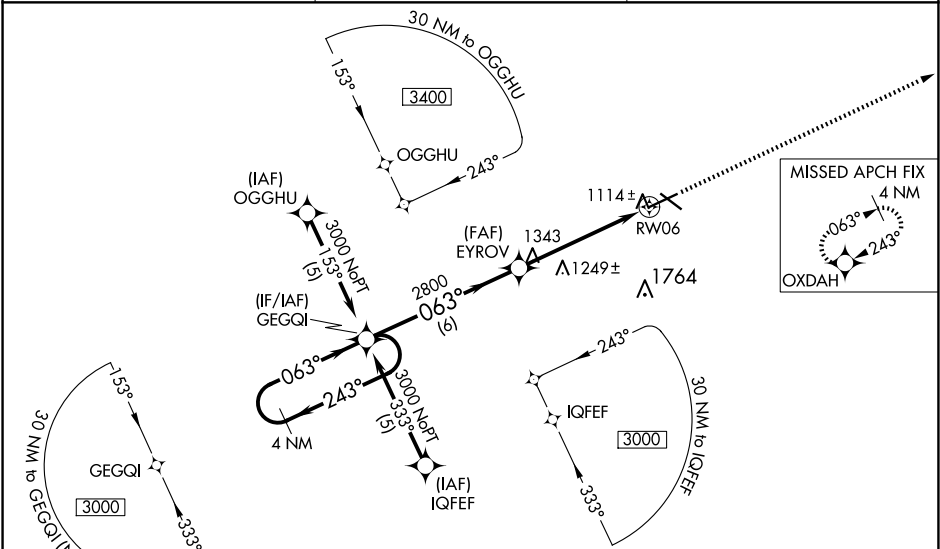
RNP APCH.

Baro-VNAV NA when using Webster City altimeter setting. For uncompensated Baro-VNAV systems, LNAV/VNAV NA below -17°C or above 54°C. VDP NA when using Webster City altimeter setting. When local altimeter setting not received, use Webster City altimeter setting: increase LPV DA to 1349 feet; increase LNAV/VNAV DA to 1567 feet and all Cats visibility ¼ SM; increase all MDAs 60 feet and LNAV Cats C/D and Circling Cat C visibility ¼ SM. For inoperative MALSR when using Webster City altimeter setting, increase LPV all Cats visibility to 1 mile.

MALSR

MISSED APPROACH:  
Climb to 3000 direct  
OXDAH and hold.

AWOS-3PT <b>118.775</b>	MINNEAPOLIS CENTER <b>134.0 288.3</b>	UNICOM <b>123.0 (CTAF)</b>
----------------------------	--	-------------------------------



ELEV 1156  TDZE 1107	
<div><div>4 NM Holding Pattern</div><div><div>3000</div><div>←243°</div><div>063°→</div></div><div>GP 3.00° TCH 54</div></div> <div><div>3000</div><div>OXDAH</div></div> <div><div>↑</div><div>OXDAH</div></div> <div><div>*1.2 NM to RW06</div><div>*LNAV only.</div></div> <div><div>RW06</div></div> <div><div>6 NM</div><div>4 NM</div><div>1.2 NM</div></div>	
CATEGORY	A B C D
LPV DA	1307-½ 200 (200-½)
LNAV/VNAV DA	1525-1 418 (400-1)
LNAV MDA	1500-½ 393 (400-½) 1500-1 393 (400-1)
CIRCLING	1560-1 404 (500-1) 1620-1 464 (500-1) 1740-1½ 584 (600-1½) 2080-3 924 (1000-3)

MIRL Rwy 12-30

HIRL Rwy 6-24

REIL Rwy 12, 24 and 30