

WAAS CH 82615 W30A	APP CRS 305°	Rwy Idg TDZE 1142 Apt Elev 1156
--	------------------------	---

RNAV (GPS) RWY 30

FORT DODGE RGNL (FOD)

RNP APCH.

▼

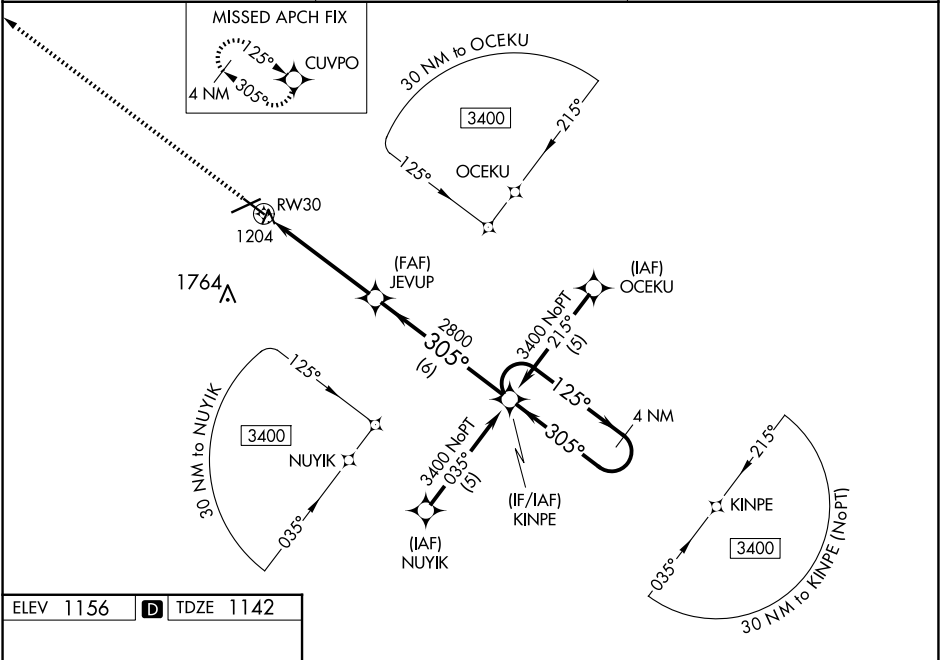
For uncompensated Baro-VNAV systems, LNAV/VNAV NA below -17°C or above 54°C.

▲

Helicopter visibility reduction below ¾ SM NA. VDP and Baro-VNAV NA when using Webster City altimeter setting. When local altimeter setting not received, use Webster City altimeter setting: increase LPV DA to 1466 feet and all Cats visibility ¼ SM; increase LNAV/VNAV DA to 1516 feet; increase all MDA 60 feet and LNAV Cats C/D and Circling Cat C visibility ¼ SM.

MISSED APPROACH: Climb to 3400 direct CUVPO and hold.

AWOS-3PT 118.775	MINNEAPOLIS CENTER 134.0 288.3	UNICOM 123.0 (CTAF) 0
----------------------------	--	---------------------------------



ELEV 1156 **D** TDZE 1142

MIRL Rwy 12-30 **0**
HIRL Rwy 6-24 **0**
REIL Rwy 12, 24 and 30 **0**

3400	CUVPO	KINPE			4 NM Holding Pattern
