

WAAS CH <b>99615</b> <b>W12A</b>	APP CRS <b>125°</b>	Rwy Idg TDZE <b>1128</b> Apt Elev <b>1156</b>
--	------------------------	---

RNAV (GPS) RWY 12

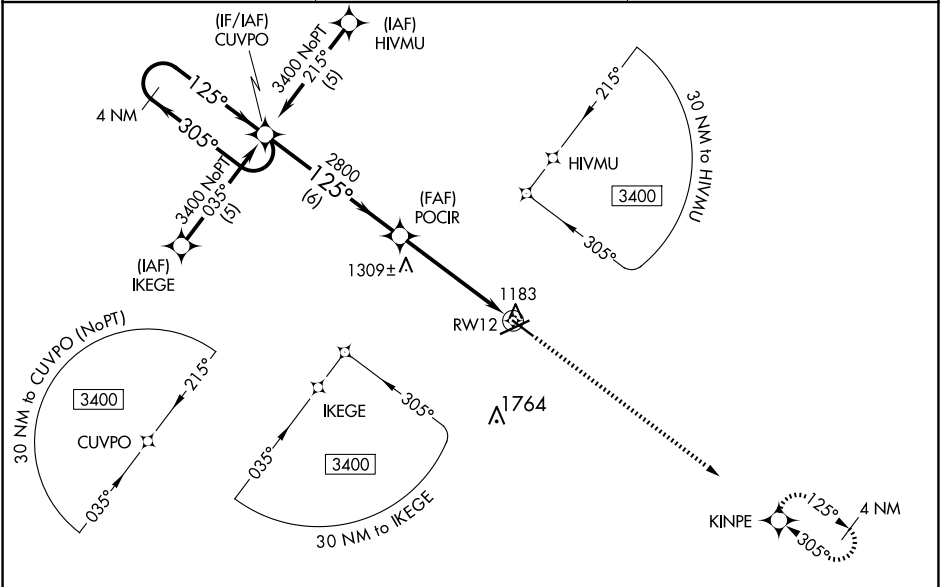
FORT DODGE RGNL (FOD)

RNP APCH.

▼ For uncompensated Baro-VNAV systems, LNAV/VNAV NA below -17°C or above 54°C. Visibility reduction by helicopters NA. When local altimeter setting not received, use Webster City altimeter setting: increase LPV DA to 1447 feet and visibility all Cats ¼ SM; increase LNAV/VNAV DA to 1495 feet; increase all MDAs 60 feet and Circling Cat C visibility ¼ SM. VDP and Baro-VNAV NA when using Webster City altimeter setting.

MISSED APPROACH: Climb to 3400 direct KINPE and hold.

AWOS-3PT <b>118.775</b>	MINNEAPOLIS CENTER <b>134.0 288.3</b>	UNICOM <b>123.0 (CTAF) 0</b>
----------------------------	--	---------------------------------



ELEV 1156 TDZE 1128

4 NM Holding Pattern

CUVPO

POCIR

RW12

KINPE

\*1.3 NM to RW12

\*LNAV only

GP 3.00° TCH 51

6 NM 3.8 NM 1.3

CATEGORY	A	B	C	D
LPV DA	1405-1 277 (300-1)			
LNAV/VNAV DA	1453-1¼ 325 (300-1¼)			
LNAV MDA	1560-1	432 (500-1)	1560-1½ 432 (500-1½)	1560-1½ 432 (500-1½)
CIRCLING	1560-1 404 (500-1)	1620-1 464 (500-1)	1740-1½ 584 (600-1½)	2080-3 924 (1000-3)

MIRL Rwy 12-30 0

HIRL Rwy 6-24 0

REIL Rwy 12, 24 and 30 0