

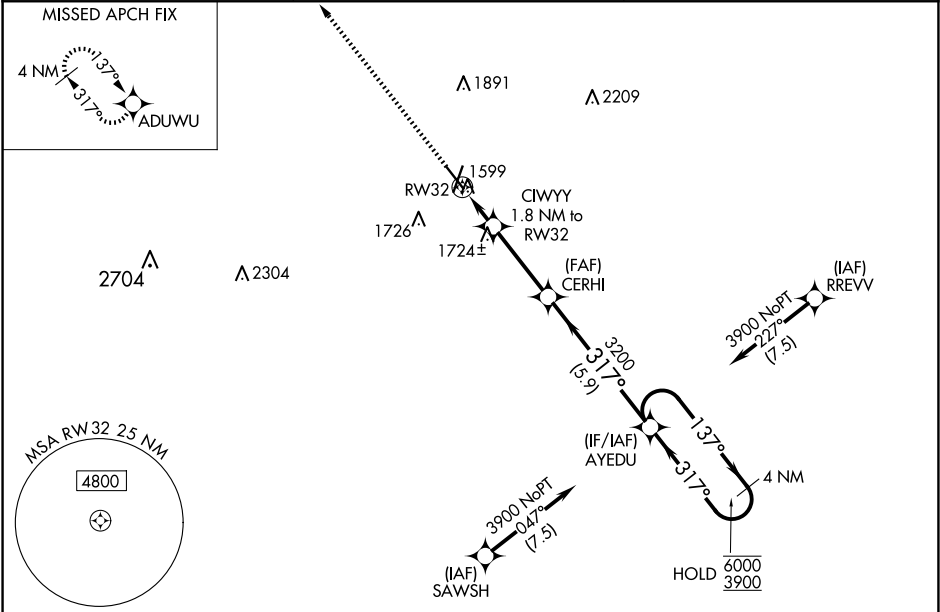
WAAS CH <b>86415</b> <b>W32A</b>	APP CRS <b>317°</b>	Rwy Idg TDZE Apt Elev	<b>5160</b> <b>1560</b> <b>1573</b>
--	------------------------	-----------------------------	---

RNAV (GPS) RWY 32

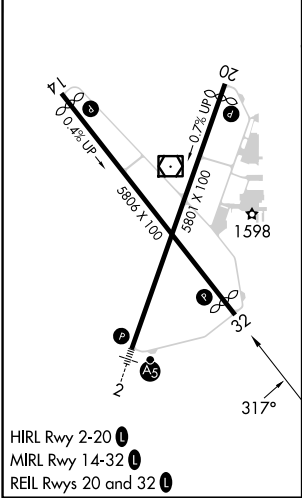
NORFOLK RGNL/KARL STEFAN MEML FLD (OFK)



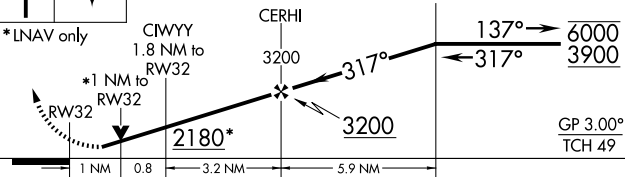

RNP APCH.	MISSED APPROACH: Climb to 3900 direct ADUWU and hold.
<div><div>▼</div><div>Rwy 32 helicopter visibility reduction below ¾ SM NA.</div><div>▲</div><div>For uncompensated Baro-VNAV systems, LNAV/VNAV NA below -22°C or above 54°C.</div></div>	

ASOS <b>119.025</b>	MINNEAPOLIS CENTER <b>125.025 235.625</b>	UNICOM <b>122.7 (CTAF) 0</b>
------------------------	--	---------------------------------



ELEV 1573	<b>D</b>	TDZE 1560
-----------	----------	-----------



3900	ADUWU	VGSI and RNAV glidepath not coincident (VGSI Angle 3.50/TCH 49).		4 NM Holding Pattern
				
*LNAV only				
1 NM 0.8 3.2 NM 5.9 NM				
CATEGORY	A	B	C	D
LPV DA	1858-1 298 (300-1)			
LNAV/ VNAV DA	2019-1⅓ 459 (500-1⅓)			
LNAV MDA	1980-1 420 (500-1)	1980-1⅛ 420 (500-1⅛)		
 CIRCLING	2060-1 487 (500-1)	2100-1 527 (600-1)	2260-2 687 (700-2)	2360-2½ 787 (800-2½)

NC-2, 10 JUL 2025 to 07 AUG 2025

NC-2, 10 JUL 2025 to 07 AUG 2025