

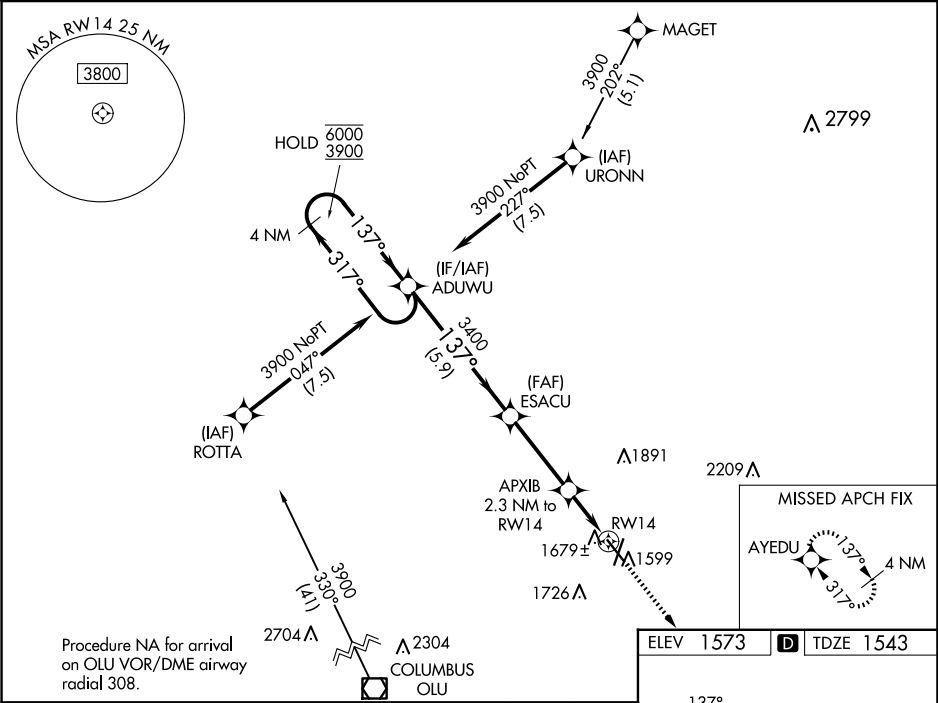
WAAS CH 62915 W14A	APP CRS 137°	Rwy Idg TDZE Apt Elev	5160 1543 1573
----------------------------------------	------------------------	-----------------------------	-------------------------------------------

RNAV (GPS) RWY 14

NORFOLK RGNL/KARL STEFAN MEML FLD (OFK)

RNP APCH - GPS.	MISSED APPROACH: Climb to 3900 direct AYEDU and hold.
For uncompensated Baro-VNAV systems, LNAV/VNAV NA below -23°C or above 54°C.	

ASOS 119.025	MINNEAPOLIS CENTER 125.025 235.625	UNICOM 122.7 (CTAF) 0
------------------------	----------------------------------------------	---------------------------------



4 NM Holding Pattern				
ADUWU				
6000 ← 317° 3900 137° →				
GP 3.00° TCH 40				
5.9 NM 3.4 NM 1.2 NM 1.1 NM				
CATEGORY	A	B	C	D
LPV DA	1808-1		265 (300-1)	
LNAV/VNAV DA	1860-1		317 (300-1)	
LNAV MDA	1940-1 397 (400-1)		1940-1½ 397 (400-1½)	
CIRCLING	2060-1 487 (500-1)	2100-1 527 (600-1)	2260-2 687 (700-2)	2360-2½ 787 (800-2½)

