

APP CRS	Rwy Idg	4158
065°	TDZE	151
	Apt Elev	151

RNAV (GPS) RWY 7
GAINESVILLE RGNL (GNV)

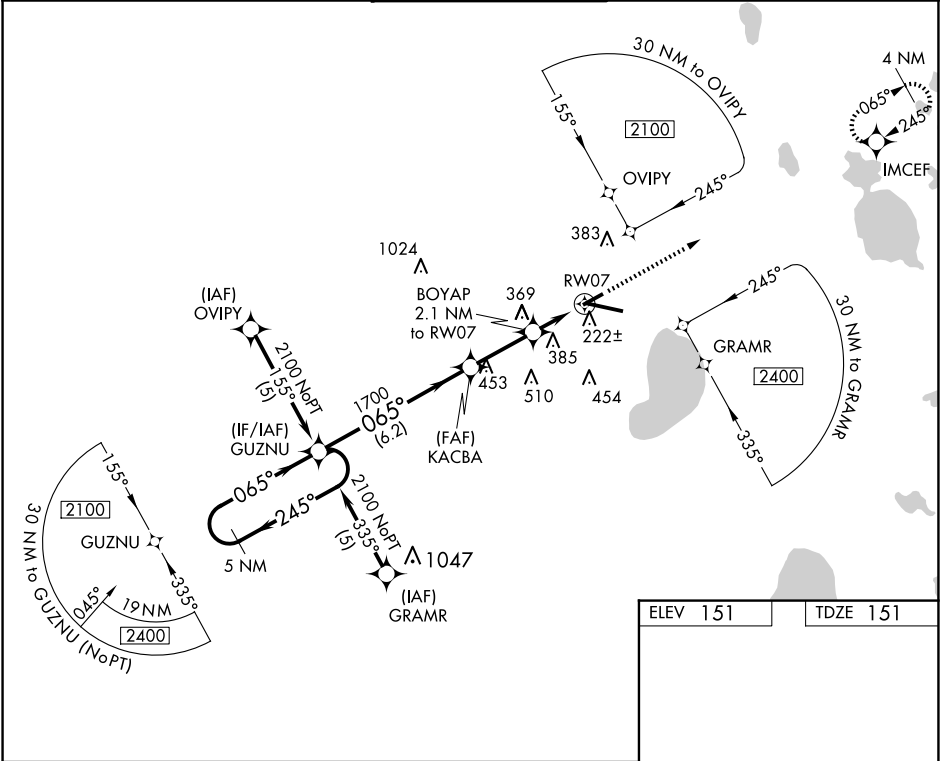
▼

▲

DME/DME RNP-0.3 NA. Visibility reduction by helicopters NA. VDP NA when using Ocala Intl-Jim Taylor Fld altimeter setting. When local altimeter setting not received, use Ocala Intl-Jim Taylor Fld altimeter setting; increase all MDAs 100 feet and increase LNAV Cat C/D and Circling Cat C visibility ¼ SM and Circling Cat D ½ SM. When VGSi inoperative, Circling Rwy 25 NA at night.

MISSED APPROACH: Climb to 2000
direct IMCEF and hold.

ATIS 127.15	JACKSONVILLE APP CON 118.175 338.25	GAINESVILLE TOWER★ 119.55 (CTAF) 0 353.7	GND CON 121.7	UNICOM 122.95
----------------	--	---	------------------	------------------



5 NM Holding Pattern

GUZNU

KACBA

BOYAP 2.1 NM to RW07

1.3 NM to RW07

RW07

2000

IMCEF

2100

245°

065°

065°

1700

3.04°

TCH 44

860

0.8

1.3 NM

CATEGORY

A

B

C

D

LNAV MDA

620-1

469 (500-1)

620-1¼

469 (500-1¼)

620-1½

469 (500-1½)

CIRCLING

620-1

469 (500-1)

700-1

549 (600-1)

760-1¾

609 (700-1¾)

820-2

669 (700-2)

REIL Rwy 11

MIRL Rwy 7-25

HIRL Rwy 11-29