

WAAS CH <b>69610</b> <b>W03A</b>	APP CRS <b>030°</b>	Rwy Ldg TDZE Apt Elev	<b>5204</b> <b>700</b> <b>708</b>
--	------------------------	-----------------------------	---

RNAV (GPS) RWY 3

CLINTON MUNI (CWI)

▼

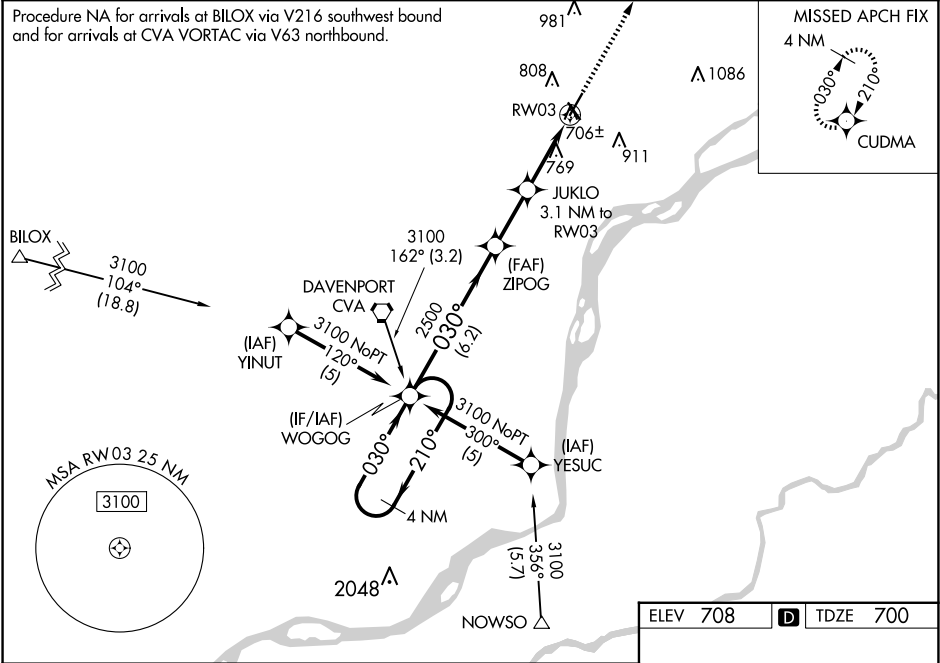
▲

For uncompensated Baro-VNAV systems, LNAV/VNAV NA below -16°C (4°F) or above 54°C (130°F). DME/DME RNP-0.3 NA. Baro-VNAV and VDP NA when using Davenport altimeter setting. When local altimeter setting not received, use Davenport altimeter setting and increase all DA 47 feet and all MDA 60 feet.

MALSR

MISSED APPROACH: Climb to 2500 direct CUDMA and hold.

AWOS-3PT <b>125.525</b>	QUAD CITY APP CON ★ <b>125.95 257.8</b>	CLNC DEL <b>118.5 0</b>	CTAF <b>122.8</b>
----------------------------	--	----------------------------	----------------------



4 NM Holding Pattern WOGOG

3100 210° 030°

GP 3.00° TCH 56

2500

ZIPOG

JUKLO 3.1 NM to RW03

\*1.1 NM to RW03

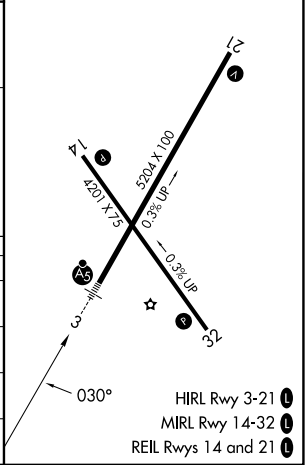
RW03

\*LNNAV only

\*1740

6.2 NM 2.3 NM 2 NM 1.1 NM

CATEGORY	A	B	C	D
LPV DA	900-½	200 (200-½)		NA
LNNAV/VNAV DA	1039-¾	339 (400-¾)		NA
LNNAV MDA	1020-½	320 (400-½)		NA
CIRCLING	1140-1 432 (500-1)	1240-1 532 (600-1)	1240-1½ 532 (600-1½)	NA



NC-3, 10 JUL 2025 to 07 AUG 2025

NC-3, 10 JUL 2025 to 07 AUG 2025