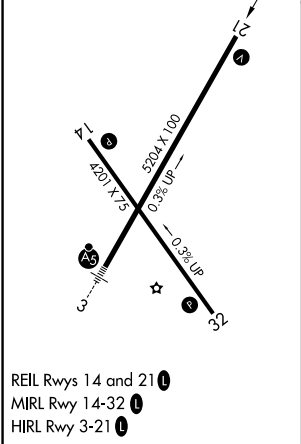
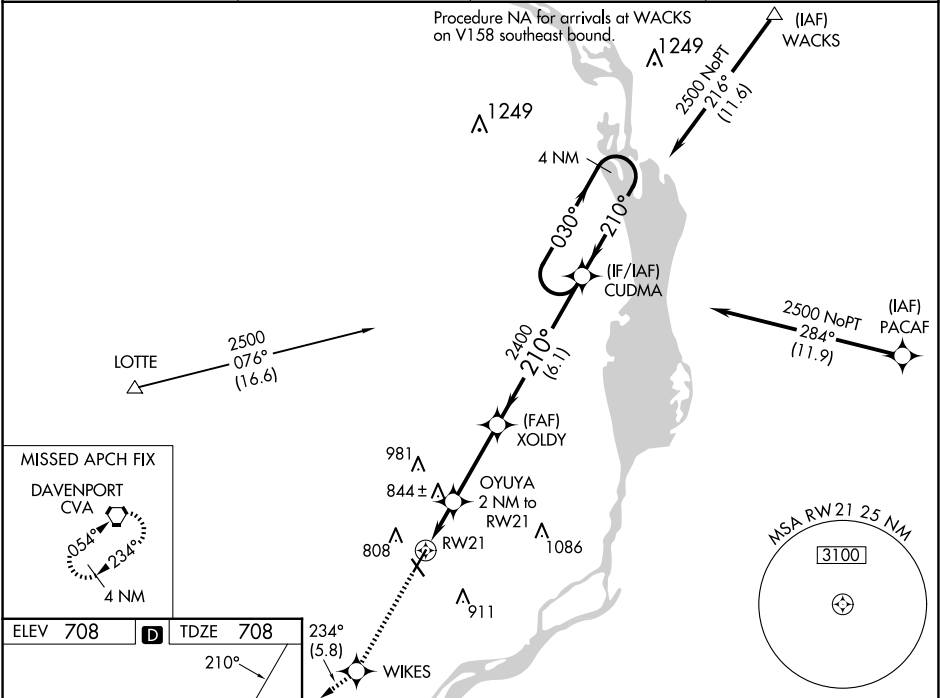


WAAS CH 86829 W21A	APP CRS 210°	Rwy Ldg TDZE Apt Elev	5204 708 708
--	------------------------	-----------------------------	---

RNAV (GPS) RWY 21
CLINTON MUNI (CWI)

<p>⚠ Rwy 21 helicopter visibility reduction below ¾ SM NA. Baro-VNAV NA when using Davenport altimeter setting. For uncompensated Baro-VNAV systems, LNAV/VNAV NA below -16°C (4°F) or above 54°C (130°F). DME/DME RNP-0.3 NA. When local altimeter setting not received, use Davenport altimeter setting: increase all DA 47 feet and all MDA 60 feet. Increase LNAV Cat C visibility ¼ mile.</p>	<p>MISSED APPROACH: Climb to 3000 direct WIKES and on track 234° to CVA VORTAC and hold.</p>
---	---

AWOS-3PT 125.525	QUAD CITY APP CON ★ 125.95 257.8	CLNC DEL 118.5 0	CTAF 122.8
----------------------------	--	----------------------------	----------------------



3000	WIKES	tr 234°	CVA	VGSI and RNAV glidepath not coincident (VGSI Angle 3.00°/TCH 34).
*LNAV only OYUYA 2 NM to RW21 XOLDY 2400 CUDMA 4 NM Holding Pattern				
RW21 1380* 2400 2500 GP 3.00° TCH 40				
2 NM 3.2 NM 6.1 NM				
CATEGORY	A	B	C	D
LPV DA	958-1 250 (300-1)			NA
LNAV/VNAV DA	958-1 250 (300-1)			NA
LNAV MDA	1100-1	392 (400-1)	1100-1½ 392 (400-1½)	NA
CIRCLING	1140-1 432 (500-1)	1240-1 532 (600-1)	1240-1½ 532 (600-1½)	NA

NC-3, 10 JUL 2025 to 07 AUG 2025

NC-3, 10 JUL 2025 to 07 AUG 2025