

WAAS CH 58229 W23A	APP CRS 232°	Rwy Idg 3994 TDZE 770 Apt Elev 790
--	------------------------	---

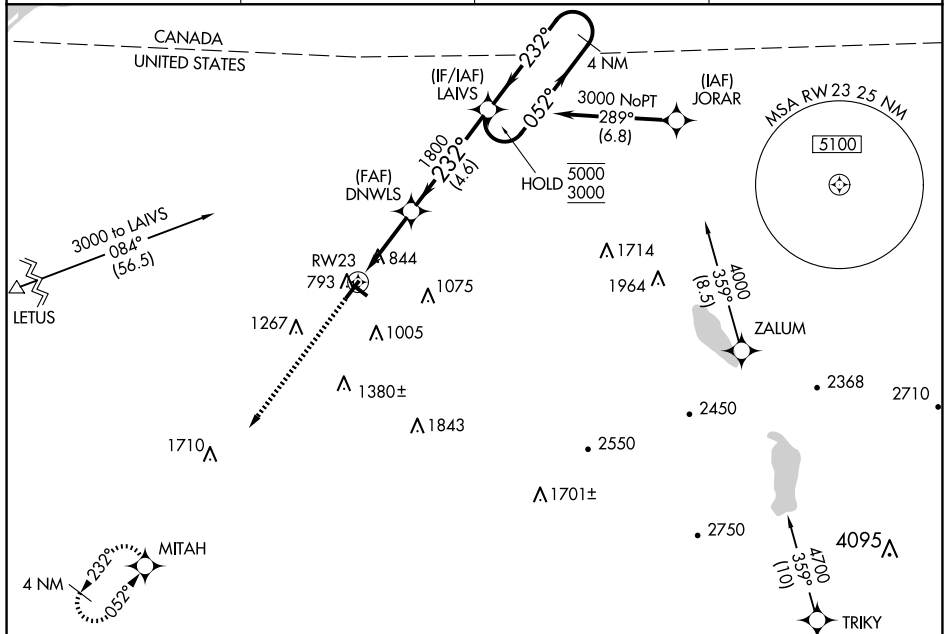
RNAV (GPS) RWY 23
MALONE-DUFORT (MAL)

RNP APCH - GPS

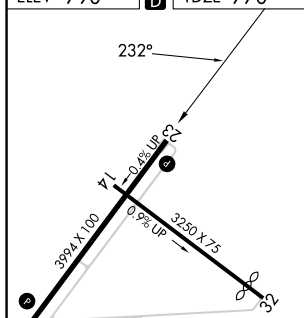
T Circling kwy 5 NA at night. Baro-VNAV NA. Use Massena Init-Richards Hd altimeter setting; when not received, use Adirondack Rgnl altimeter setting and increase LPV DA to 1208 feet; increase LNAV/VNAV DA to 1316 feet; increase all MDAs 60 feet. Increase LPV all Cats visibility $\frac{1}{8}$ SM, LNAV/VNAV all Cats $\frac{1}{4}$ SM, LNAV Cat C $\frac{1}{8}$ SM and Circling Cat C visibility $\frac{1}{4}$ SM.

MISSED APPROACH:
Climb to 3600 direct
MITAH and hold.

AWOS-AV 122.8	MSS ASOS 128.075	BOSTON CENTER 135.25 377.1	UNICOM 122.8 (CTAF) 0
-------------------------	----------------------------	--------------------------------------	---------------------------------



FILEV 790		TD7FE 770
-----------	---	-----------



3600	MITAH	DNWLS 1800 LAIVS 4 NM Holding Pattern 052° → 5000 ← 232° 3000 GP 3.00° TCH 40		
RW23				
3.2 NM		4.6 NM		
CATEGORY	A	B	C	D
LPV DA	1155 - 1 $\frac{1}{8}$ 385 (400-1 $\frac{1}{8}$)			NA
LNAV/ VNAV DA	1263-1 $\frac{3}{8}$ 493 (500-1 $\frac{3}{8}$)			NA
LNAV MDA	1240-1	470 (500-1)	1240-1 $\frac{3}{8}$ 470 (500-1 $\frac{3}{8}$)	NA
CIRCLING	1460-1 670 (700-1)	1520-1 730 (800-1)	1720-2 $\frac{3}{4}$ 930 (1000-2 $\frac{3}{4}$)	NA