

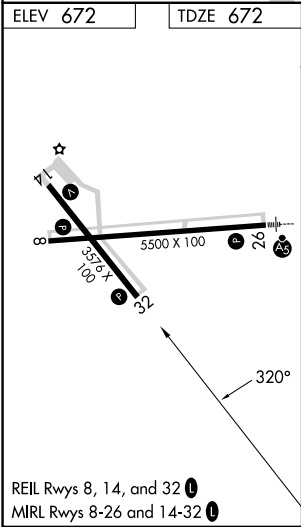
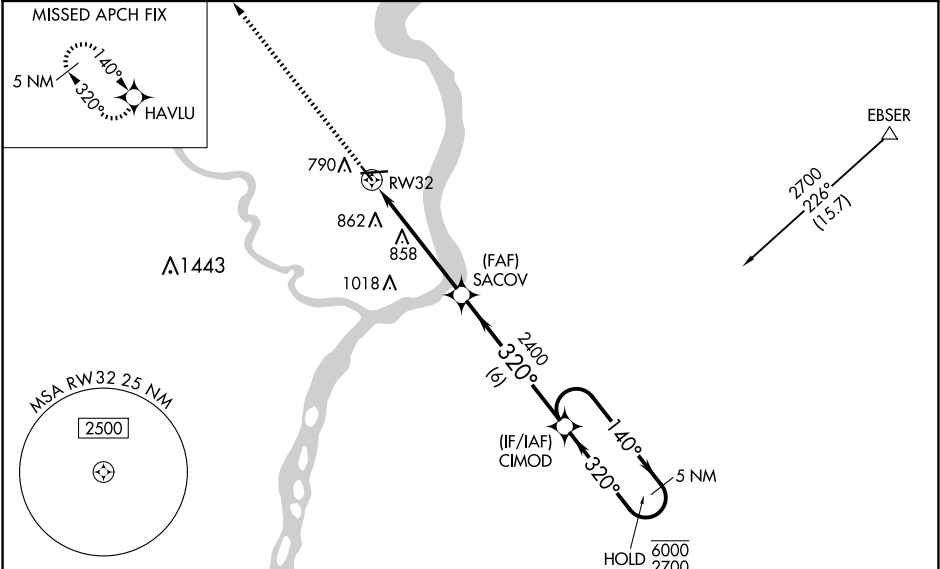
WAAS CH 40005 W32A	APP CRS 320°	Rwy ldg TDZE Apt Elev	3576 672 672
--	------------------------	-----------------------------	---

RNAV (GPS) RWY 32

KEOKUK MUNI (EOK)

RNP APCH - GPS.	MISSED APPROACH: Climb to 2400 direct HAVLU and hold.
Procedure NA at night. Rwy 32 helicopter visibility reduction below 1 SM NA. Baro-VNAV NA when using Burlington altimeter setting. For uncompensated Baro-VNAV systems, LNAV/VNAV NA below -16°C or above 54°C. When local altimeter setting not received, use Burlington altimeter setting: increase LPV DA to 978 feet; increase LNAV/VNAV DA to 1220 feet and all visibilities ¼ SM. Increase all MDAs 60 feet visibility Cat C visibility ¼ SM.	

AWOS-3 118.375	KANSAS CITY CENTER 126.225 317.775	UNICOM 122.8 (CTAF) 1
--------------------------	--	---------------------------------



2400	↑	HAVLU	VGSI and RNAV glidepath not coincident (VGSI Angle 3.00/TCH 45).			
				SACOV	CIMOD	5 NM Holding Pattern
				2400		140° → 6000 ← 320° 2700
				2400		GP 3.00° TCH 40
				5.2 NM	6 NM	
CATEGORY	A	B	C	D		
LPV DA	922-1 250 (300-1)				NA	
LNAV/ VNAV	1164-1⅓ 492 (500-1⅓)				NA	
LNAV MDA	1160-1 488 (500-1)			1160-1⅓ 488 (500-1⅓)		NA
CIRCLING	1180-1 508 (600-1)	1220-1 548 (600-1)	1220-1½ 548 (600-1½)		NA	

NC-3, 10 JUL 2025 to 07 AUG 2025

NC-3, 10 JUL 2025 to 07 AUG 2025