

LOC/DME I-BBJ	APP CRS	Rwy Idg	5500
110.9	264°	TDZE	671
Chan 46		Apt Elev	672

ILS or LOC RWY 26

KEOKUK MUNI (EOK)

DME required for LOC only.

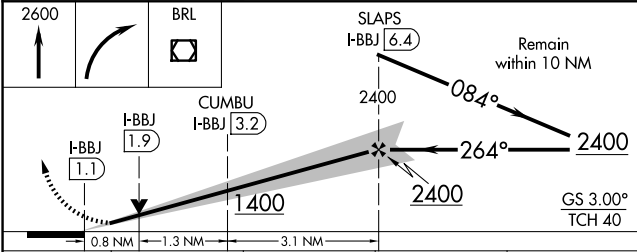
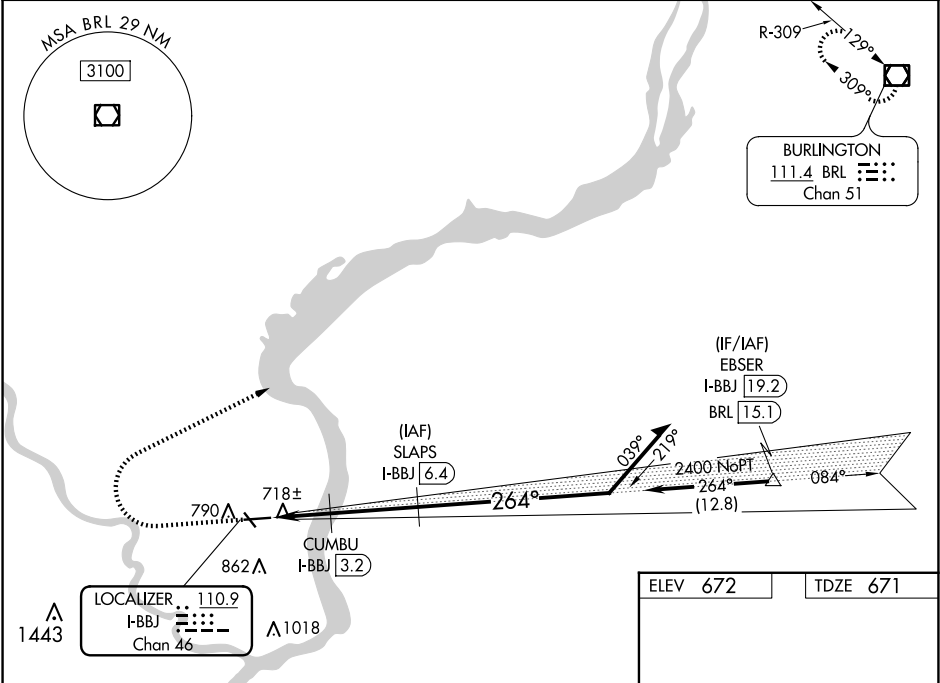
NA

Circling Rwy 32 NA at night. Inop table does not apply to S-ILS 26. VDP NA when using Burlington altimeter setting. When local altimeter setting not received, use Burlington altimeter setting and increase S-ILS 26 DA to 927 feet, increase all MDAs 60 feet and Circling visibility Cat C ¼ SM. For inop ALS, increase S-LOC 26 Cats A and B visibility to 1 SM, and Cat C to ¾ SM. For inop ALS when using Burlington altimeter setting, increase S-LOC 26 all Cats visibility to 1 SM.

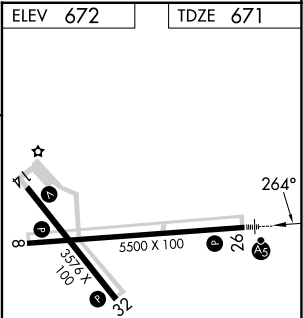
MALSR

MISSED APPROACH:
Climb to 2600 then
right turn direct BRL
VOR/DME and hold.

AWOS-3 118.375	KANSAS CITY CENTER 126.225 317.775	UNICOM 122.8 (CTAF) 0
-------------------	---------------------------------------	--------------------------



CATEGORY	A	B	C	D
S-ILS 26	871-¾	200 (200-¾)		NA
S-LOC 26	980-¾	309 (400-¾)		NA
CIRCLING	1180-1 508 (600-1)	1220-1 548 (600-1)	1220-1½ 548 (600-1½)	NA



ELEV 672	TDZE 671
REIL Rwy 8, 14, and 32 0	
MIRL Rwy 8-26 and 14-32 0	