

WAAS CH <b>73036</b> <b>W12A</b>	APP CRS <b>115°</b>	Rwy Idg TDZE Apt Elev	<b>6000</b> <b>1621</b> <b>1648</b>
--	------------------------	-----------------------------	---

RNAV (GPS) RWY 12

BROOKINGS RGNL (BKX)

▼

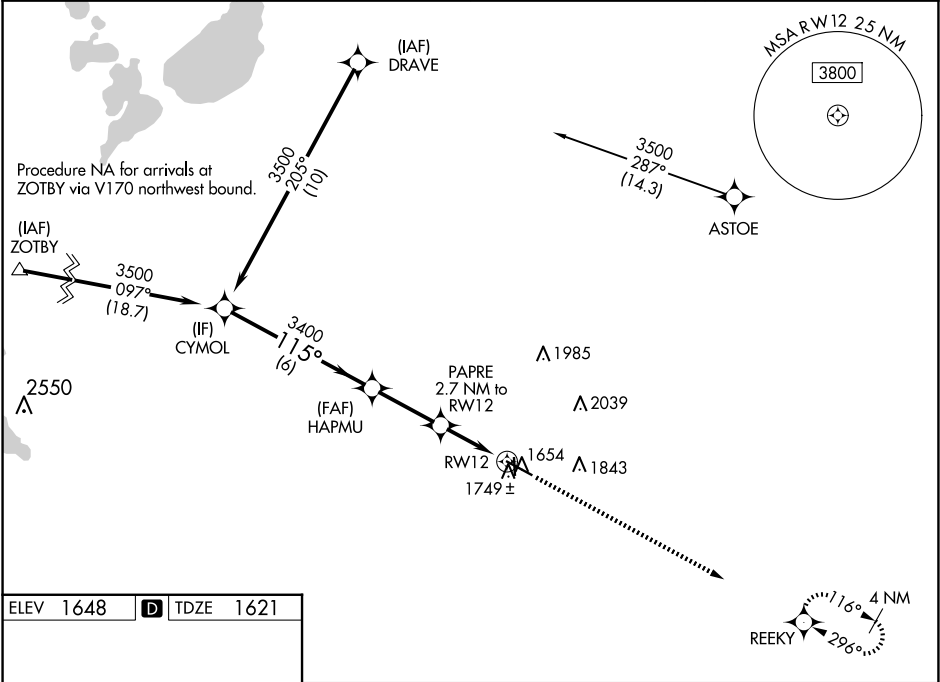
▲

For uncompensated Baro-VNAV systems, LNAV/VNAV NA below -18°C (0°F) or above 54°C (130°F). DME/DME RNP-0.3 NA. When local altimeter setting not received, use Pipestone altimeter setting and increase all DA 81 feet and all MDA 100 feet; increase LNAV/VNAV all Cats visibility ¼ mile; LNAV Cats C and D visibility ⅜ mile; Circling Cats C and D visibility ½ mile. Baro-VNAV and VDP NA when using Pipestone altimeter setting. Night landing Rwy 17 NA.

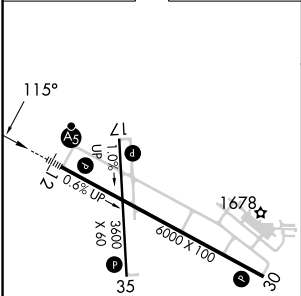
MALSR

MISSED APPROACH: Climb to 3500 direct REEKY and hold.

AWOS-3PT <b>119.925</b>	MINNEAPOLIS CENTER <b>132.05 317.4</b>	GCO <b>121.725</b>	UNICOM <b>123.0</b> (CTAF)
----------------------------	---	-----------------------	-------------------------------



ELEV 1648	<b>D</b>	TDZE 1621
-----------	----------	-----------



- HIRL Rwy 12-30
- MIRL Rwy 17-35
- REIL Rwy 17, 30 and 35

	CYMOL	HAPMU	PAPRE 2.7 NM to RW12	RW12
	3500	3400	*2500	
	GP 3.00° TCH 50			
	6 NM	2.8 NM	1.6 NM	1.1 NM
CATEGORY	A	B	C	D
LPV DA	1821-½ 200 (200-½)			
LNAV/ VNAV DA	1948-⅝ 327 (300-⅝)			
LNAV MDA	2000-½ 379 (400-½)		2000-⅝ 379 (400-⅝)	
CIRCLING	2140-1 492 (500-1)	2160-1 512 (600-1)	2340-2 692 (700-2)	2340-2¼ 692 (700-2¼)