

LOC/DME I-BKX <b>111.35</b> Chan <b>50(Y)</b>	APP CRS <b>116°</b>	Rwy Idg <b>6000</b> TDZE <b>1621</b> Apt Elev <b>1648</b>
---	------------------------	---

ILS or LOC RWY 12

BROOKINGS RGNL (BKX)

DME required. ADF required. From ASTOE: RNAV 1-GPS required.

NA

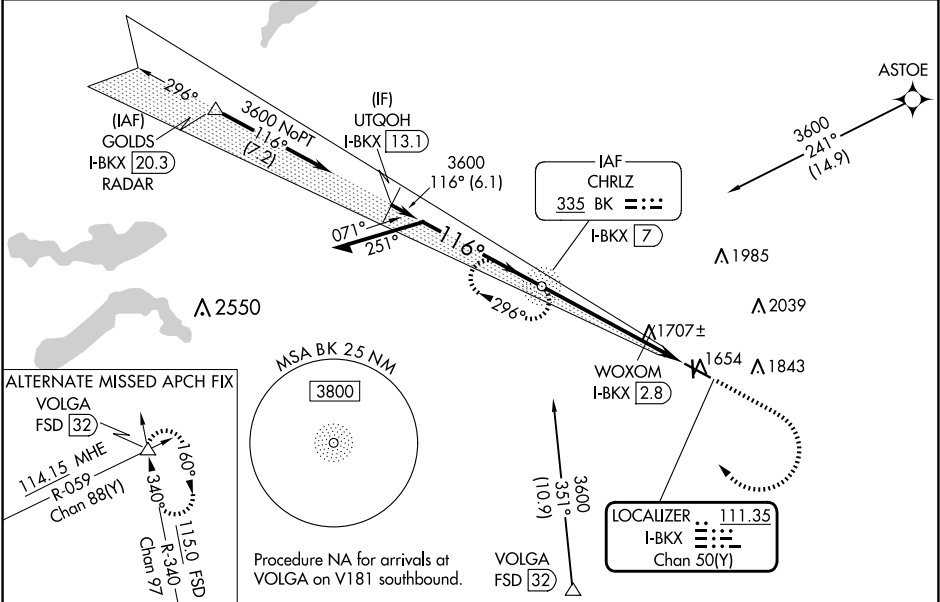
Circling Rwy 17 NA at night. VDP NA when using Pipestone Muni altimeter setting. For inop ALS, increase S-LOC 12 Cats C/D visibility to 1¾ SM. For inop ALS when using WOXOM fix minimums, increase S-LOC 12 Cat C/D visibility to 1 SM.

MALSR

AS

MISSED APPROACH: Climb to 2100 then climbing right turn to 3600 direct BK NDB and hold, continue climb-in hold to 3600.

AWOS-3PT <b>119.925</b>	MINNEAPOLIS CENTER <b>132.05 317.4</b>	GCO <b>121.725</b>	UNICOM <b>123.0 (CTAF)</b>
----------------------------	---	-----------------------	-------------------------------



BK CHRLZ NDB I-BKX [7]				ELEV 1648	TDZE 1621
Remain within 10 NM					
3600 116° 3600 2140 4.3 NM 0.5 NM 1.1 NM					
GS 3.00° TCH 50					
CATEGORY	A	B	C	D	
S-ILS 12	1821-½ 200 (200-½)				
S-LOC 12	2140-½	519 (500-½)	2140-1	519 (500-1)	
CIRCLING	2140-1 492 (500-1)	2160-1 512 (600-1)	2340-2 692 (700-2)	2340-2¼ 692 (700-2¼)	
WOXOM FIX MINIMUMS					
S-LOC 12	2000-½	379 (400-½)	2000-⅝	379 (400-⅝)	
CIRCLING	2140-1 492 (500-1)	2160-1 512 (600-1)	2340-2 692 (700-2)	2340-2¼ 692 (700-2¼)	
HIRL Rwy 12-30 MIRL Rwy 17-35 REIL Rws 17, 30, and 35				FAF to MAP 5.9 NM	
				Knots	60 90 120 150 180
				Min:Sec	5:54 3:56 2:57 2:22 1:58