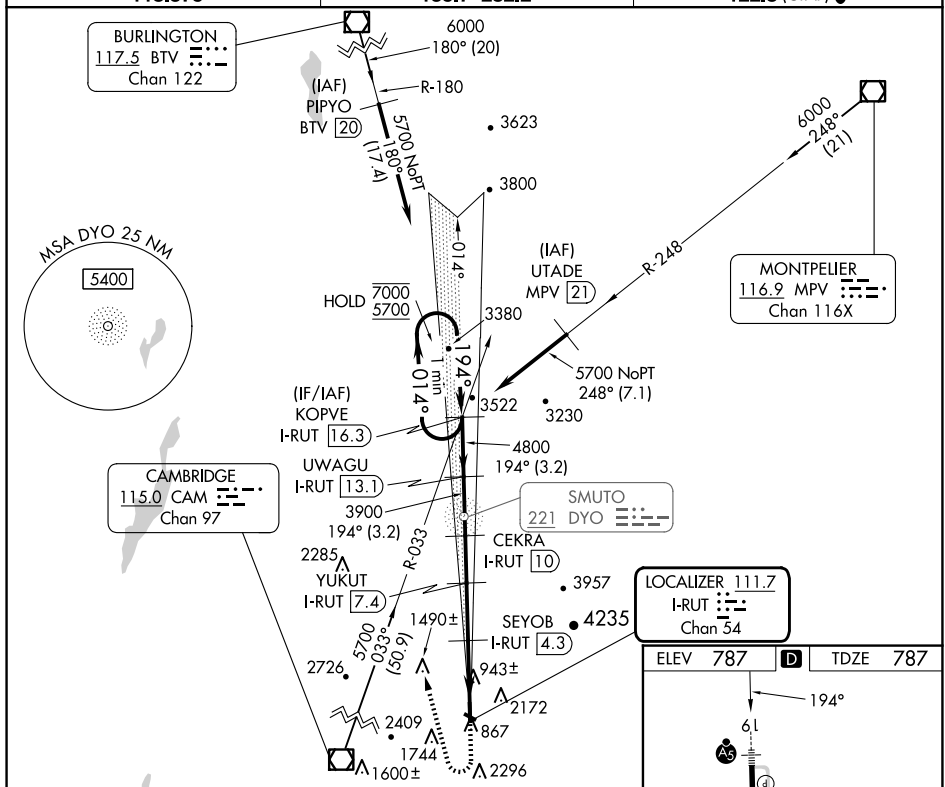


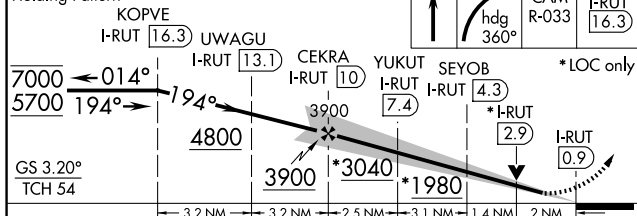
ILS Z or LOC Z RWY 19
RUTLAND/SOUTHERN VERMONT RGNL (RUT)


MISSED APPROACH: Climb to 1900 then climbing right turn to 5700 on heading 360° and CAM VOR/DME R-033 to KOPVE/I-RUT 16.31 DME and hold. If unable to meet climb gradient, see ILS Y or LOC Y Rwy 19. # Missed approach requires minimum climb of 425 feet per NM to 3200.

T Circling to Rwy 13, 31 NA at night. Circling NA
A northeast of Rwy 19 and 31. For inop ALS,
 increase S-ILS 19 visibility all Cats to 1 1/2 SM,
 and increase S-LOC 19 Cat C/D visibility to 2 SM.
☼ -8°C

UNICOM
122.8 (CTAF) **L**

1900 ↑	5700 hdg 360°	CAM R-033	KOPVE I-RUT 16.3
-----------	---------------------	--------------	------------------------



CATEGORY	A	B	C	D
S-ILS 19 #	1451-1½ 664 (700-1½)			
S-LOC 19 #	1520-½	733 (800-½)	1520-1½	733 (800-1½)
 CIRCLING	2160-1¼ 1373 (1400-1¼)	2160-1½ 1373 (1400-1½)	2520-3 1733 (1800-3)	2760-3 1973 (2000-3)

