

WAAS CH 77734 W36A	APP CRS 001°	Rwy Idg TDZE Apt Elev	5000 272 272
--	------------------------	-----------------------------	---

RNAV (GPS) RWY 36

HARDY-ANDERS FLD/NATCHEZ-ADAMS COUNTY (HE/Z)

RNP APCH

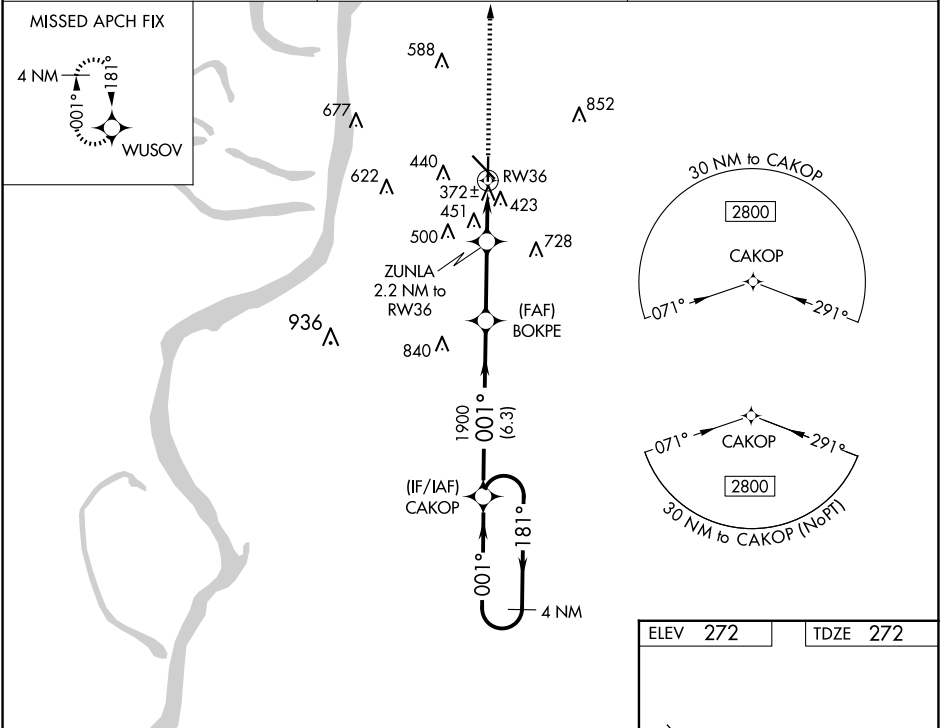
▼

▲

When local altimeter setting not received, use Vicksburg Tallulah Rgnl altimeter setting and increase all MDAs 140 feet; increase LP and LNAV Cats C/D visibility ¾ SM. Increase Circling Cats C visibility ½ SM. Rwy 36 helicopter visibility reduction below 1 SM NA. Straight-in Rwy 36 NA at night, Circling Rwy 36 NA at night.

MISSED APPROACH: Climb to 2800 direct WUSOV and hold.

AWOS-3PT 124.675	HOUSTON CENTER 120.975 299.6	UNICOM 122.8 (CTAF) 0
----------------------------	--	--



4 NM Holding Pattern

Visual Segment - Obstacles.

2800

WUSOV

2800

181°

001°

001°

CAKOP

BOKPE

ZUNLA 2.2 NM to RW36

1900

1000

RW36

6.3 NM

2.8 NM

2.2 NM

CATEGORY	A	B	C	D
LP MDA	660-1	388 (400-1)	660-1⅓	388 (400-1⅓)
LNAV MDA	720-1	448 (500-1)	720-1⅓	448 (500-1⅓)
CIRCLING	740-1 468 (500-1)	820-1 548 (600-1)	1020-2¼ 748 (800-2¼)	1220-3 948 (1000-3)

HIRL Rwy 14-32

MIRL Rwy 18-36 0

45

6500 X 150

81

5000 X 150

353

36

32

001°

SC-4, 10 JUL 2025 to 07 AUG 2025

SC-4, 10 JUL 2025 to 07 AUG 2025