

RNP APCH - GPS.

T

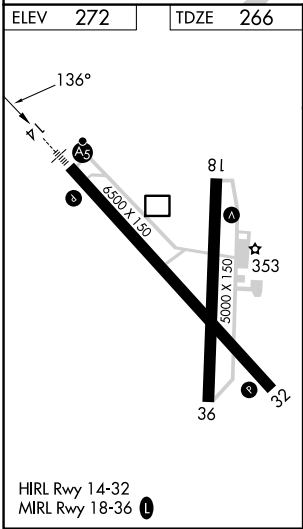
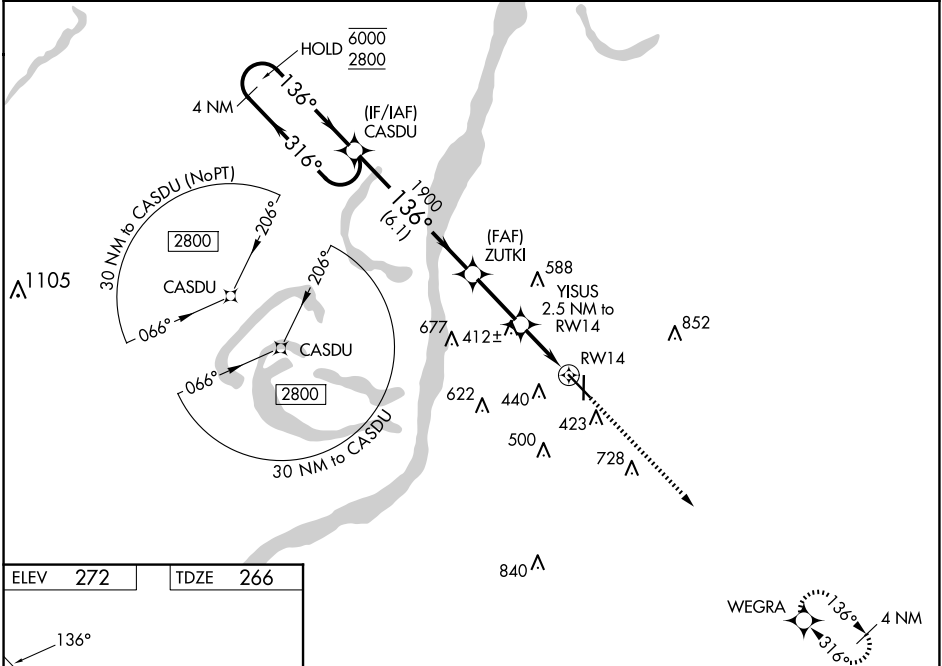
A

Circling Rwy 36 NA at night. Rwy 14 helicopter visibility reduction below ¾ SM NA. For uncompensated Baro-VNAV systems, LNAV/VNAV NA below -15° C or above 54° C. For inop ALS, increase LNAV Cats C and D visibility to 1½ SM. Inop table does not apply to LPV, LNAV/VNAV, and LNAV Cats A and B.

MALSRL

MISSED APPROACH: Climb to 2800 direct WEGRA and hold.

AWOS-3PT 124.675	HOUSTON CENTER 120.975 299.6	UNICOM 122.8 (CTAF)
---------------------	---------------------------------	------------------------



4 NM Holding Pattern		CASDU	ZUTKI	YISUS 2.5 NM to RW14	WEGRA
6000 ← 316°		2800 → 136°	1900	1100	2800
GP 3.00° TCH 54				1.1 NM to RW14	
		6.1 NM	2.5 NM	1.4 NM	1.1 NM
CATEGORY	A	B	C	D	
LPV DA	575-1		309 (400-1)		
LNAV/VNAV DA	560-1		294 (300-1)		
LNAV MDA	680-1		414 (500-1)		
CIRCLING	740-1 468 (500-1)	820-1 548 (600-1)	1020-2¼ 748 (800-2¼)	1220-3 948 (1000-3)	