

LOC I-HEZ  
**111.35**

APP CRS  
**136°**

Rwy Idg  
TDZE **266**  
Apt Elev **272**

ILS or LOC RWY 14

HARDY-ANDERS FLD/NATCHEZ-ADAMS COUNTY (HE/Z)

RNP APCH - GPS required for procedure entry.

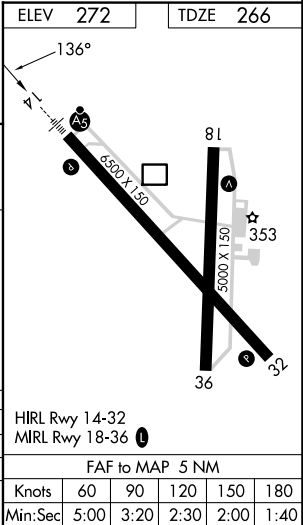
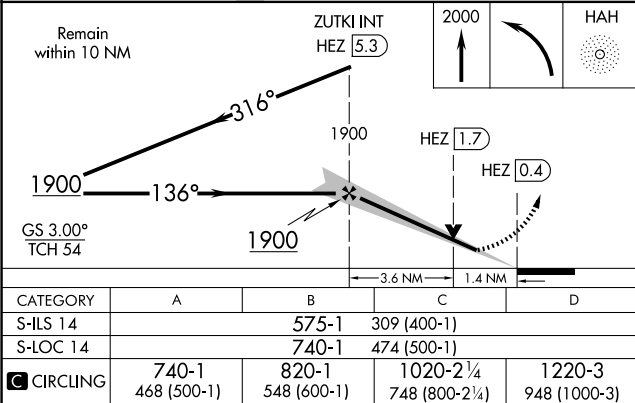
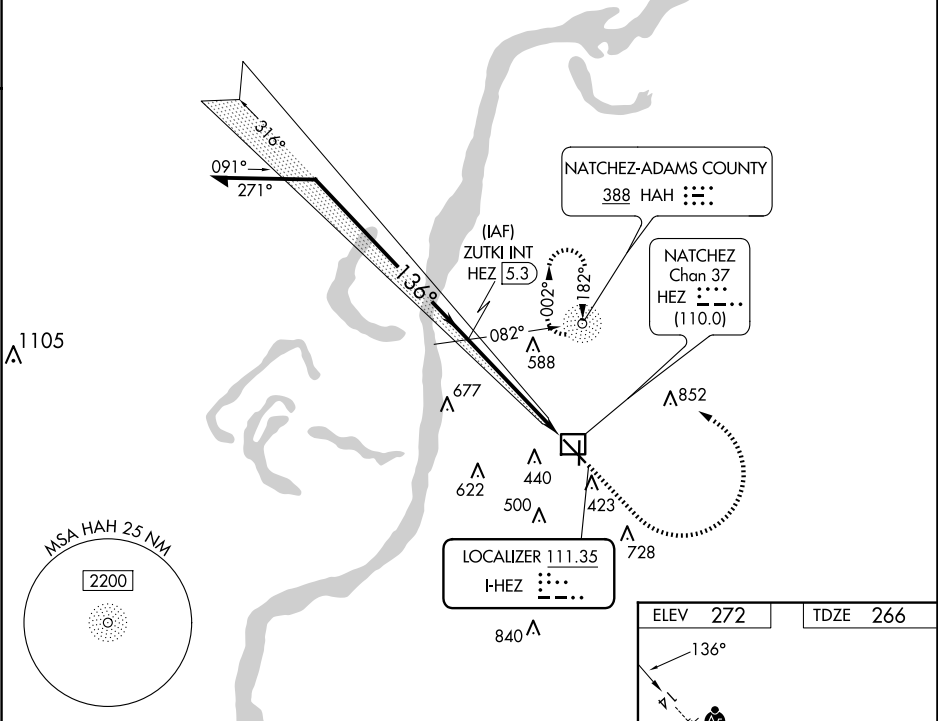
ADF required.

MALSR

MISSED APPROACH:  
Climb to 2000 then  
left turn direct  
HAH NDB and hold.

▼ Circling Rwy 36 NA at night. Rwy 14 helicopter visibility reduction below ¾ SM NA.  
▲ Inop table does not apply to S-ILS 14 all Cats and S-LOC 14 Cats A/B.  
For inop ALS, increase S-LOC 14 Cat C/B visibility to 1¾ SM.

AWOS-3PT <b>124.675</b>	HOUSTON CENTER <b>120.975 299.6</b>	UNICOM <b>122.8 (CTAF) 0</b>
----------------------------	--	---------------------------------



SC-4, 10 JUL 2025 to 07 AUG 2025

SC-4, 10 JUL 2025 to 07 AUG 2025