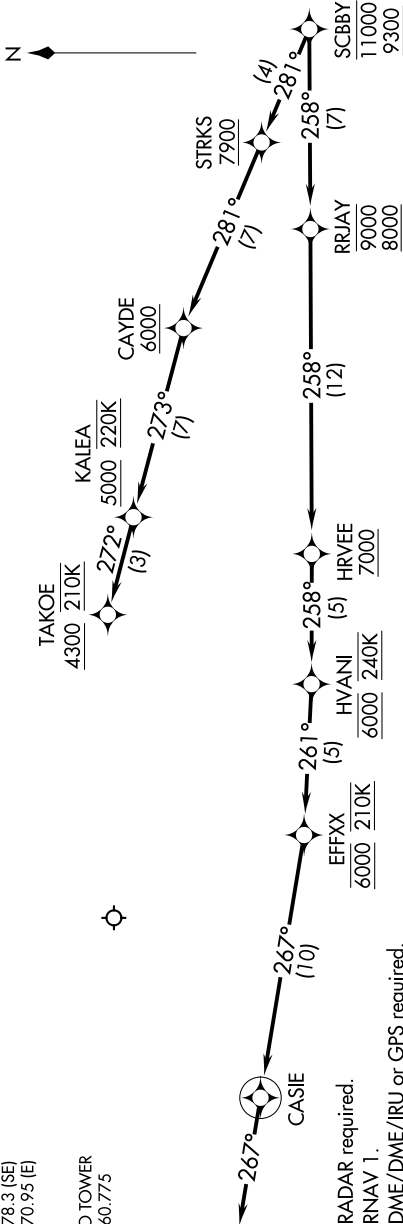


SW-3, 10 JUL 2025 to 07 AUG 2025

SOCAL APP CON
134.0 278.3 (SE)
126.7 370.95 (E)
D-ATIS
124.25
ONTARIO TOWER
120.6 360.775

(SCBBY.SCBBY2) 18032
SCBBY TWO ARRIVAL (RNAV) Arrival Routes

AL-965 (FAA)
ONTARIO INTL (ONT)
ONTARIO, CALIFORNIA



NOTE: Chart not to scale.

NOTE: RADAR required.
NOTE: RNAV 1.
NOTE: DME/DME/IRU or GPS required.
NOTE: For non-GPS equipped aircraft, JLI DME must be operational.
NOTE: Turbojet and high performance turboprop aircraft only.
NOTE: Expect runway 26L unless otherwise advised by ATC.
NOTE: Expect local area altimeter setting reaching FL200.

ARRIVAL ROUTE DESCRIPTION

LANDING RUNWAYS 8L/R: From SCBBY on track 258° to cross RRJAY between 8000 and 9000, then on track 258° to cross HRVEE at or above 7000, then on track 258° to cross HVANI at 6000 and at 240K, then on track 261° to cross EFFX at 6000 and at 210K, then on track 267° to CASIE, then on track 267°. Expect RNAV (RNP) Z RWY 8L approach or RADAR vectors to final approach course.

LANDING RUNWAYS 26L/R: From SCBBY on track 281° to cross STRKS at or above 7900, then on track 281° to cross CAYDE at or above 6000, then on track 273° to cross KALEA at or above 5000 and at 220K, then on track 272° to cross TAKOE at or above 4300 and at 210K. Expect assigned instrument approach or RADAR vectors to final approach course.

LOST COMMUNICATIONS

LANDING WEST: Proceed on the RNAV (RNP) Z RWY 26L approach or ILS or LOC RWY 26L approach.
LANDING EAST: Proceed on the RNAV (RNP) Z RWY 8L approach or ILS or LOC RWY 8L approach.

SW-3, 10 JUL 2025 to 07 AUG 2025