

WAAS
CH **53406**
W26A

APP CRS
258°

Rwy Ldg **12197**
TDZE **932**
Apt Elev **944**

RNAV (GPS) Y RWY 26R

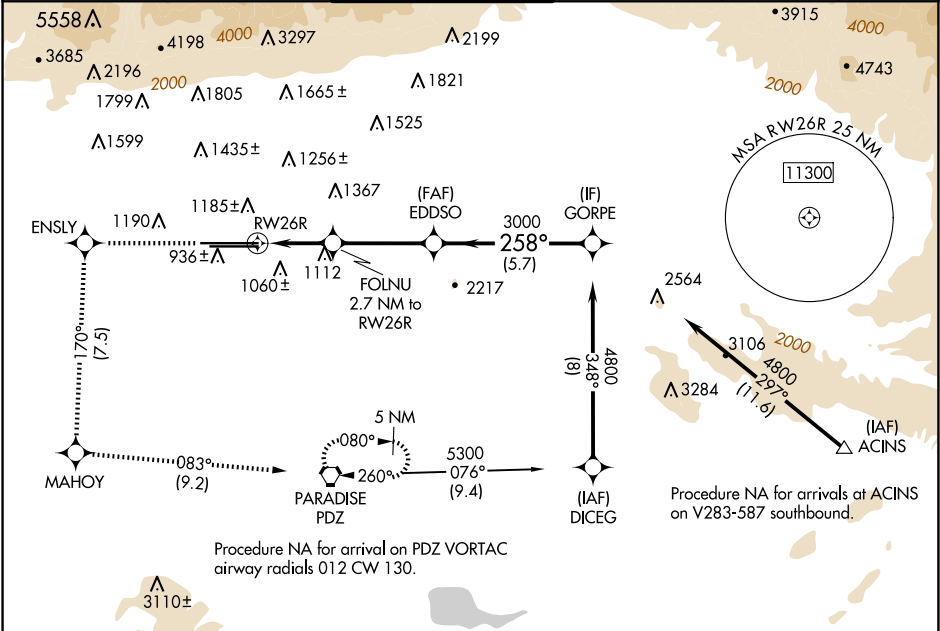
ONTARIO INTL (ONT)

RNP APCH - GPS.
⚠ Circling NA north of Rwy 8L-26R. For uncompensated Baro-VNAV systems, procedure NA below 2°C or above 54°C.

ALSF-2

MISSED APPROACH: Climb to 4700 direct ENSLY and on track 170° to MAHOY and on track 083° to PDZ VORTAC and hold, continue climb-in-hold to 4700.

D-ATIS	SOCAL APP CON	ONTARIO TOWER	GND CON	CLNC DEL	CPDLC
124.25	127.0 318.2	120.6 360.775	121.9 257.8	132.9	



ELEV 944

D TDZE 932

4700

↑

ENSLY

tr 170°

MAHOY

tr 083°

PDZ

VGSI and RNAV glidepath not coincident (VGSI Angle 3.00/TCH 75).

EDDSO

3000

GORPE

4800

1.2 NM

1.5 NM

3.6 NM

5.7 NM

1840

258°

3000

GP 3.00°

TCH 60

CATEGORY

A

B

C

D

LPV DA

1132/18

200 (200-½)

LNAV/VNAV DA

1267/55

335 (400-1)

LNAV MDA

1380/24

448 (500-½)

1380/45

448 (500-¾)

CIRCLING

1400-1

456 (500-1)

1500-1½

556 (600-1½)

1540-2

596 (600-2)

TDZ/CL Rwys 8L, 26L and 26R

HIRL Rwys 8L-26R and 8R-26L