

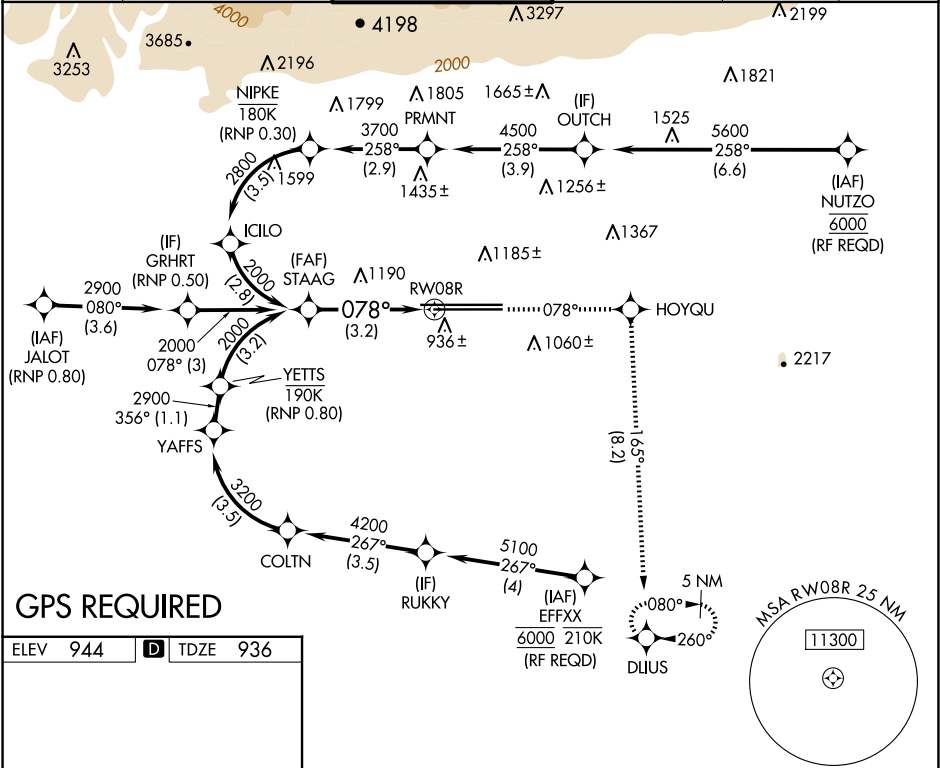
APP CRS	Rwy Ldg	10200
078°	TDZE	936
	Apt Elev	944

RNAV (RNP) Z RWY 8R

ONTARIO INTL (ONT)

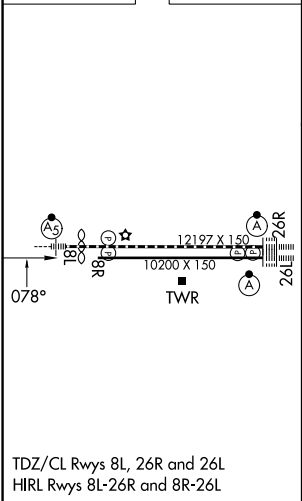
<div><div>▽</div><div>NA</div></div>	For uncompensated Baro-VNAV systems, procedure NA below 2°C (36°F) or above 54°C (130°F).	MISSED APPROACH: Climb to 5300 on track 078° to HOYQU and on track 165° to DLIUS and hold, continue climb-in-hold to 5300.
--------------------------------------	---	--

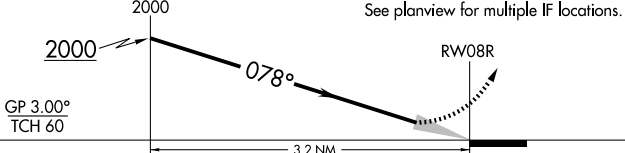
D-ATIS	SOCAL APP CON	ONTARIO TOWER	GND CON	CLNC DEL	CPDLC
124.25	127.0 318.2	120.6 360.775	121.9 257.8	132.9	



GPS REQUIRED

ELEV	944	D	TDZE	936
------	-----	---	------	-----



VGSI and RNAV glidepath not coincident (VGSI Angle 3.00/TCH 65).				5300 ↑ tr 078°		HOYQU ✦		tr 165°		DLIUS ✦	
See planview for multiple IF locations.											
											
CATEGORY		A		B		C		D			
RNP 0.30 DA		1342-1 $\frac{3}{8}$ 406 (400-1 $\frac{3}{8}$)									
AUTHORIZATION REQUIRED											