

APP CRS  
**258°**

Rwy Ldg  
TDZE  
**926**

Apt Elev  
**944**

**RNAV (RNP) Z RWY 26L**  
ONTARIO INTL (ONT)

RNP AR APCH - GPS.

⚠

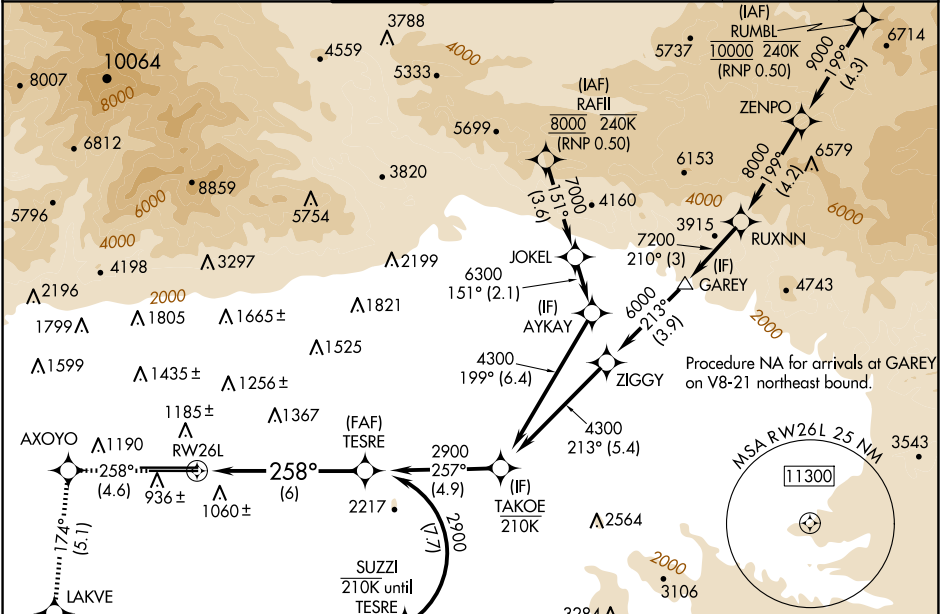
For uncompensated Baro-VNAV systems, procedure NA below 1°C or above 54°C. For inop ALS, increase RNP 0.10 visibility all Cats to RVR 4500, RNP 0.17 visibility all Cats to RVR 5000, RNP 0.30 visibility all Cats to RVR 6000.

ALS-F-2

Ⓐ

MISSED APPROACH: Climb to 3400 on track 258° to AXOYO and track 174° to LAKVE and track 122° to MRIAM and track 079° to ADRYN and hold.

D-ATIS <b>124.25</b>	SOCAL APP CON <b>127.0 318.2</b>	ONTARIO TOWER <b>120.6 360.775</b>	GND CON <b>121.9 257.8</b>	CLNC DEL <b>132.9</b>	CPDLC
-------------------------	-------------------------------------	---------------------------------------	-------------------------------	--------------------------	-------



ELEV 944

**D** TDZE 926

3400

↑

tr 258°

AXOYO

↖

tr 174°

LAKVE

↖

tr 122°

MRIAM

↖

tr 079°

ADRYN

↖

tr 079°

TESRE

↖

2900

VGSI and RNAV glidepath not coincident (VGSI Angle 3.00°/TCH 74).

RW26L

↖

258°

See planview for multiple IF locations.

GP 3.00°

TCH 58

CATEGORY	A	B	C	D
RNP 0.10 DA		1203/24	277 (300-½)	
RNP 0.17 DA		1245/24	319 (400-½)	
RNP 0.30 DA		1322/35	396 (400-¾)	

AUTHORIZATION REQUIRED

TDZ/CL Rwy's 8L, 26R and 26L

HIRL Rwy's 8L-26R and 8R-26L