

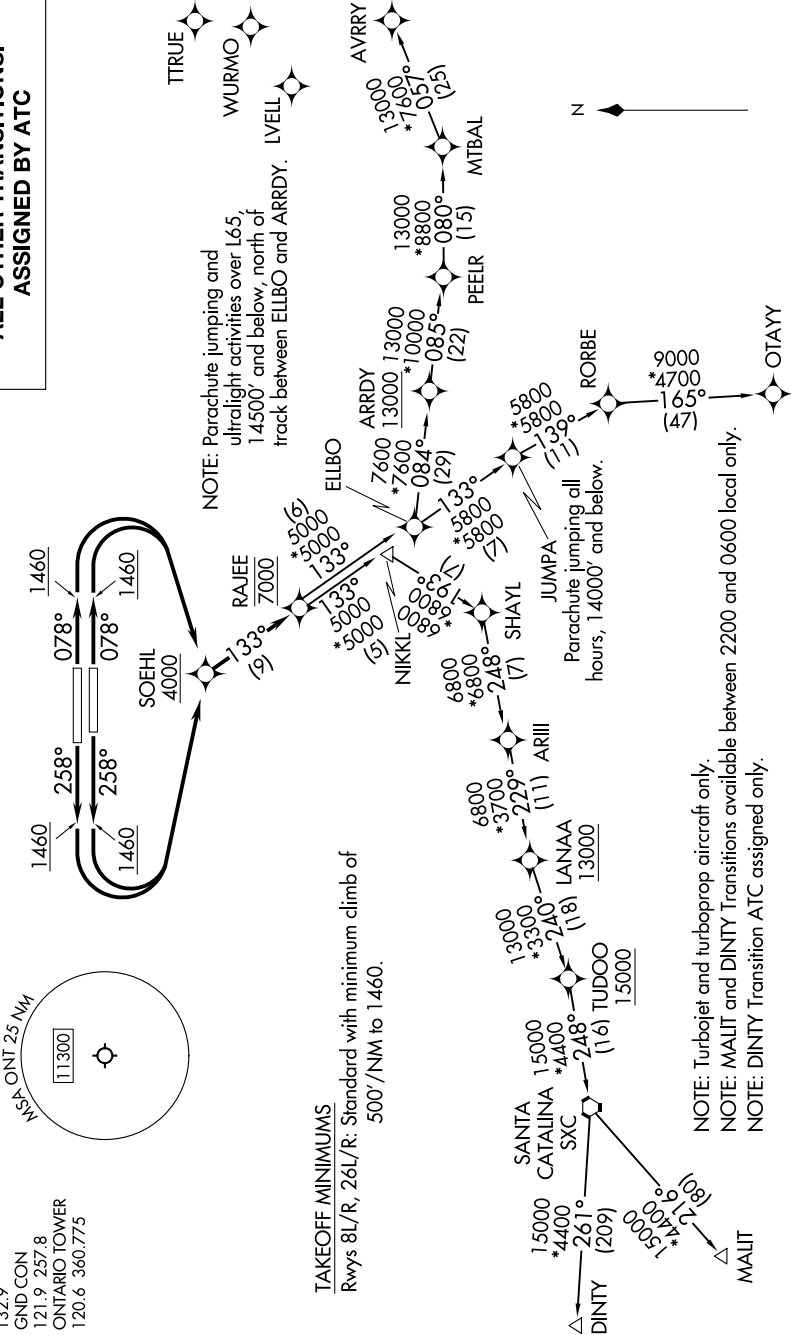
AL-965 (FAA)

SW-3, 10 JUL 2025 to 07 AUG 2025

SOCAL DEP CON
135.4 377.125
D-ATIS
124.25
CINC DEL
132.9
GND CON
121.9 257.8
ONTARIO TOWER
120.6 360.775

RNAV 1 - DME/DME/IRU or GPS: OTAY, MTBAL and AVRRY Transitions.
RNAV 1 - GPS: DINTY and MALIT Transitions.
RADAR required for non-GPS equipped aircraft.

TOP ALTITUDE
DINTY AND MALIT TRANSITIONS:
15000
ALL OTHER TRANSITIONS:
ASSIGNED BY ATC



TAKEOFF MINIMUMS
Rwys 8L/R, 26L/R: Standard with minimum climb of
500' /NM to 1460.

NOTE: Turbopjet and turboprop aircraft only.
NOTE: MALIT and DINTY Transitions available between 2200 and 0600 local only.
NOTE: DINTY Transition ATC assigned only.

NOTE: Chart not to scale.

(CONTINUED ON FOLLOWING PAGE)