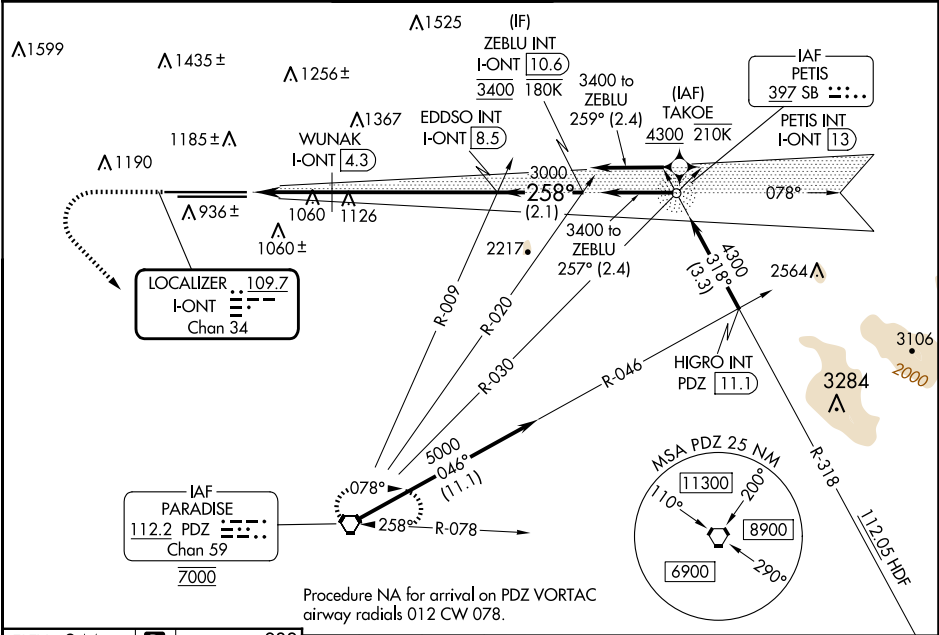


LOC/DME I-ONT	APP CRS	Rwy Ldg	26R	26L
109.7	258°	TDZE	12197	10200
Chan 34		Apt Elev	932	926
			944	944

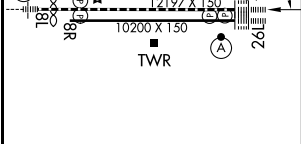
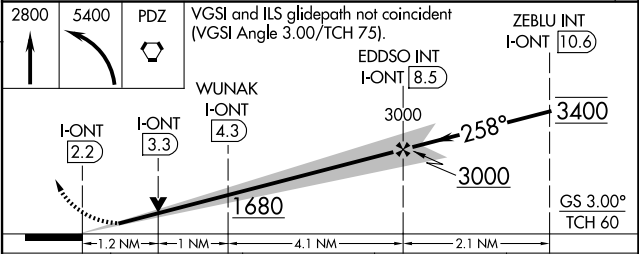
ILS or LOC RWY 26R
ONTARIO INTL (ONT)

RNP APCH - GPS. From TAKOE.		ALSIF-2 Rwy 26R	ALSIF-2 Rwy 26L	MISSED APPROACH: Climb to 2800 then climbing left turn to 5400 direct PDZ VORTAC and hold, continue climb-in-hold to 5400.	
Circling NA north of Rwy 8L-26R. For inop ALS, increase S-LOC 26R Cat C and D visibility to 2 SM.					

D-ATIS	SOCAL APP CON	ONTARIO TOWER	GND CON	CLNC DEL	CPDLC
124.25	127.0 318.2	120.6 360.775	121.9 257.8	132.9	



ELEV 944	TDZE 26R 932
	TDZE 26L 926



TDZ/CL Rwy 8L, 26L and 26R HIRL Rwy 8L-26R and 8R-26L				
FAF to MAP 6.3 NM				
Knots	60	90	120	150
Min:Sec	6:18	4:12	3:09	2:31
WUNAK FIX MINIMUMS (DME REQUIRED)				
S-LOC 26R	1320/24	388 (400-½)	1320/35	388 (400-½)