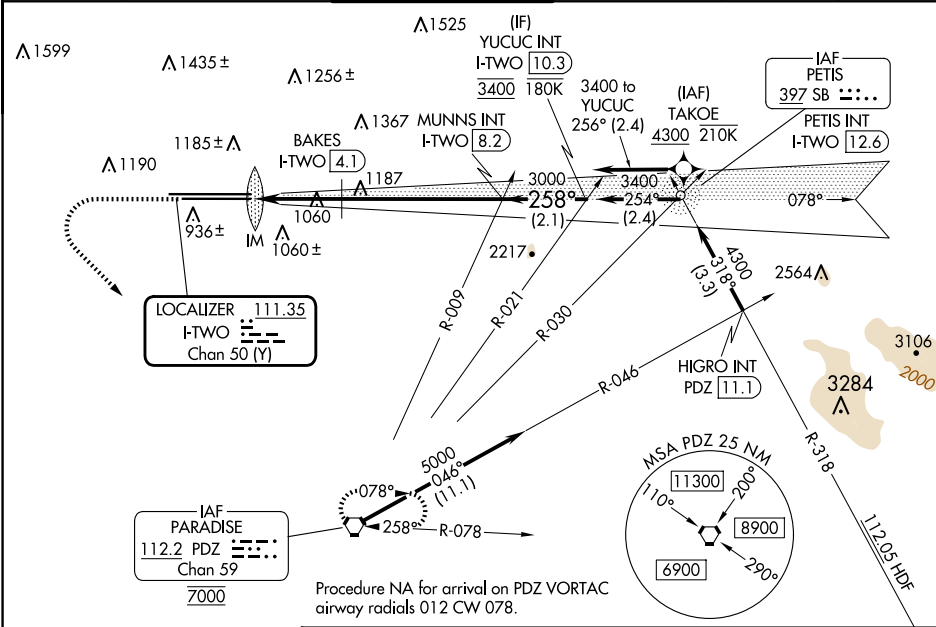


|               |         |          |       |       |
|---------------|---------|----------|-------|-------|
| LOC/DME I-TWO | APP CRS | Rwy Ldg  | 26L   | 26R   |
| 111.35        | 258°    | TDZE     | 10200 | 12197 |
| Chan 50 (Y)   |         | Apt Elev | 926   | 932   |
|               |         |          | 944   | 944   |

ILS or LOC RWY 26L  
ONTARIO INTL (ONT)

|  |                |                |  |
|--|----------------|----------------|--|
| RNP APCH - GPS. From TAKOE.  | ALSF-2 Rwy 26L | ALSF-2 Rwy 26R | MISSED APPROACH: Climb to 2800 then climbing left turn to 5400 direct PDZ VORTAC and hold, continue climb-in-hold to 5400. |
| ⚠ Circling NA north of Rwy 8L-26R. For inop ALS, increase S-LOC 26L Cat C and D visibility to 2½ SM. |                |                |  |

|        |               |               |             |          |       |
|--------|---------------|---------------|-------------|----------|-------|
| D-ATIS | SOCAL APP CON | ONTARIO TOWER | GND CON     | CLNC DEL | CPDLC |
| 124.25 | 127.0 318.2   | 120.6 360.775 | 121.9 257.8 | 132.9    |       |



|                               |                                |                                   |                         |                         |   |                      |
|-------------------------------|--------------------------------|-----------------------------------|-------------------------|-------------------------|---|----------------------|
| ELEV 944                      | ⓓ TDZE 26L 926<br>TDZE 26R 932 | 2800                              | 5400                    | PDZ                     | VGSI and ILS glidepath not coincident (VGSI Angle 3.00/TCH 74). | YUCUC INT I-TWO 10.3 |
|                               |                                | MUNNS INT I-TWO 8.2               |                         |                         |   |                      |
| BAKES I-TWO 4.1               |                                | 3000                              |                         |                         |   |                      |
| I-TWO 2.8                     |                                | 3000                              |                         |                         |   |                      |
| I-TWO 1.8                     |                                | 1700                              |                         |                         |   |                      |
| 0.1 0.9 NM 1.3 NM 4 NM 2.1 NM |                                |                                   |                         |                         |   | GS 3.00°<br>TCH 58   |
| CATEGORY                      |                                | A                                 |                         | B                       | C   | D                    |
| S-ILS 26L                     |                                | 1126/18 200 (200-½)               |                         |                         |   |                      |
| S-LOC 26L                     |                                | 1700/24<br>774 (800-½)            | 1700/40<br>774 (800-¾)  | 1700-1¾<br>768 (800-1¾) | 1700-2<br>768 (800-2)   |                      |
| SIDESTEP 26R                  |                                | 1700/55                           | 768 (800-1)             | 1700-1¾<br>768 (800-1¾) | 1700-2<br>768 (800-2)   |                      |
| ⓐ CIRCLING                    |                                | 1700-1<br>756 (800-1)             | 1700-1¼<br>756 (800-1¼) | 1700-2½                 | 756 (800-2½)  |                      |
| FAF to MAP 6.3 NM             |                                | BAKES FIX MINIMUMS (DME REQUIRED) |                         |                         |   |                      |
| Knots                         |                                | 60                                | 90                      | 120                     | 150   | 180                  |
| Min:Sec                       |                                | 6:18                              | 4:12                    | 3:09                    | 2:31  | 2:06                 |
| S-LOC 26L                     |                                | 1320/24                           | 394 (400-½)             | 1320/35                 | 394 (400-¾)   |                      |

SW-3, 10 JUL 2025 to 07 AUG 2025

SW-3, 10 JUL 2025 to 07 AUG 2025