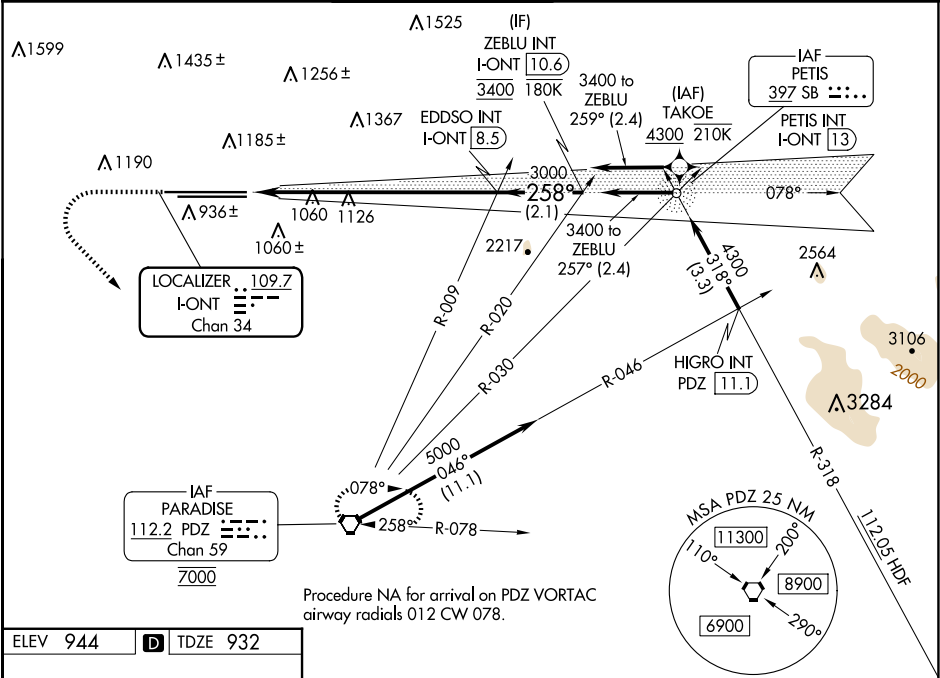


LOC/DME I-ONT <b>109.7</b> Chan <b>34</b>	APP CRS <b>258°</b>	Rwy Ldg TDZE <b>932</b> Apt Elev <b>944</b>
---	------------------------	---

ILS RWY 26R (CAT II & III)  
ONTARIO INTL (ONT)

RNP APCH - GPS. From TAKOE.		ALSF-2 	MISSED APPROACH: Climb to 2800 then climbing left turn to 5400 direct PDZ VORTAC and hold, continue climb-in-hold to 5400.		
-----------------------------	--	------------	--	--	--

D-ATIS <b>124.25</b>	SOCAL APP CON <b>127.0 318.2</b>	ONTARIO TOWER <b>120.6 360.775</b>	GND CON <b>121.9 257.8</b>	CLNC DEL <b>132.9</b>	CPDLC
-------------------------	-------------------------------------	---------------------------------------	-------------------------------	--------------------------	-------



ELEV <b>944</b>	<b>D</b>	TDZE <b>932</b>
-----------------	----------	-----------------

	<div>2800 ↑</div> <div>5400 ↘</div> <div>PDZ </div>		VGSI and ILS glidepath not coincident (VGSI Angle 3.00/TCH 75).		
			ZEBLU INT I-ONT <u>10.6</u>		
			EDDSO INT I-ONT <u>8.5</u>		
			3000 258° 3400 3000		
			GS 3.00° TCH 60		
		1163° 6.3 NM 2.1 NM			
CATEGORY	A		B	C	D
S-ILS 26R	CAT II RA 100/12 100 DA 1032				
S-ILS 26R	CAT III RVR 03				
CATEGORY II & III ILS - SPECIAL AIRCREW & AIRCRAFT CERTIFICATION REQUIRED					

TDZ/CL Rwy 8L, 26L and 26R  
HIRL Rwy 8L-26R and 8R-26L

SW-3, 10 JUL 2025 to 07 AUG 2025

SW-3, 10 JUL 2025 to 07 AUG 2025