

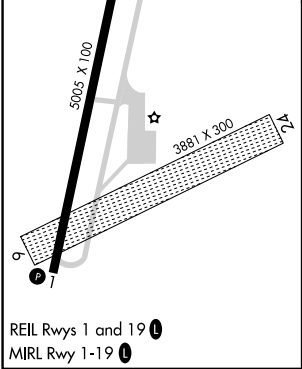
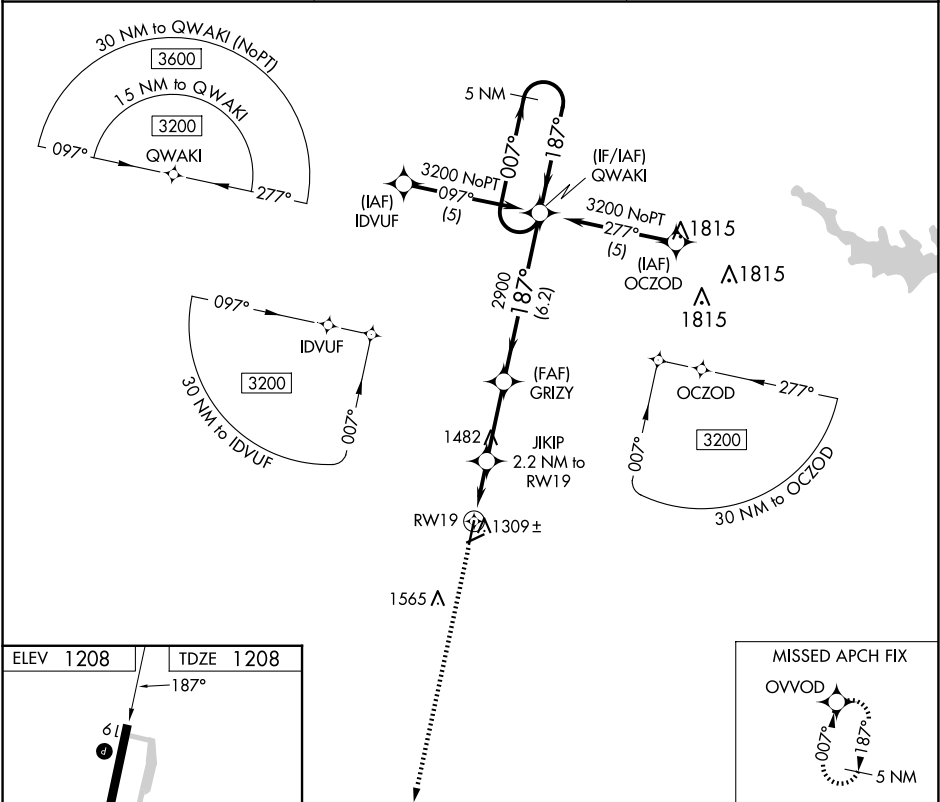
APP CRS	Rwy Idg	5005
187°	TDZE	1208
	Apt Elev	1208

RNAV (GPS) RWY 19

EMPORIA MUNI (EMP)

RNP APCH-GPS.	MISSED APPROACH: Climb to 3200 direct OVVOD and hold.
---------------	---

ASOS 126.125	KANSAS CITY CENTER 127.725 270.25	UNICOM 122.8 (CTAF) 0
-----------------	--------------------------------------	--------------------------



3200	OVVOD	VGSI and descent angles not coincident (VGSI Angle 3.00/TCH 37).		5 NM Holding Pattern
		JIKIP 2.2 NM to RW19	GRIZY	QWAKI
		1 NM to RW19	3.05° TCH 52	187°
		1940	2900	007°
		1 NM	1.2 NM	2.9 NM
			6.2 NM	3200
CATEGORY	A	B	C	D
LNAV MDA	1560-1	352 (400-1)		NA
CIRCLING	1660-1	452 (500-1)	1880-2 672 (700-2)	NA

NC-2, 10 JUL 2025 to 07 AUG 2025

NC-2, 10 JUL 2025 to 07 AUG 2025