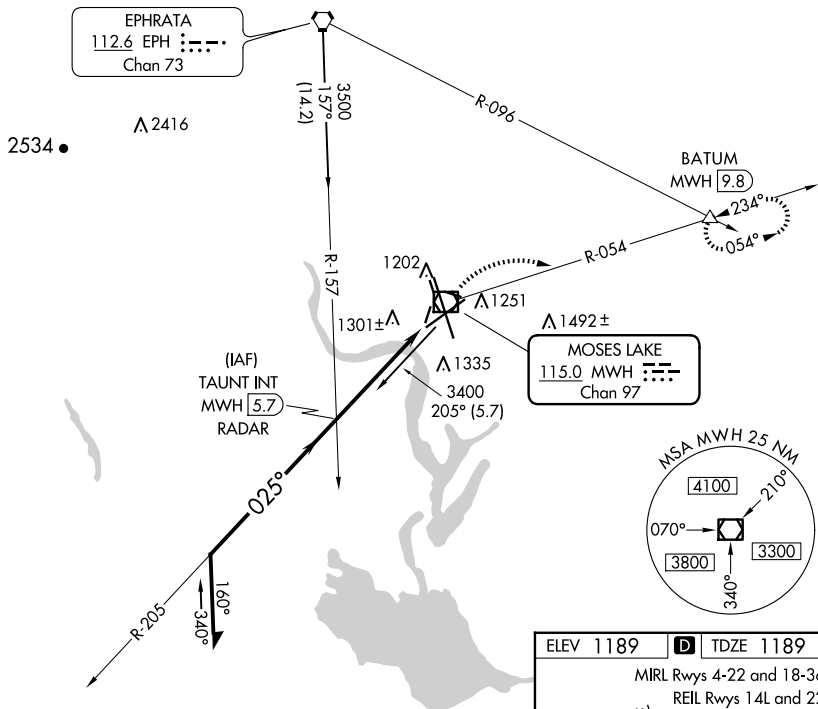


VOR RWY 4
GRANT COUNTY INTL (MWH)



MISSED APPROACH: Climbing right turn to 4000 via MWH R-054 to BATUM INT/MWH 9.8 DME and hold.

ATIS 119.05	GRANT COUNTY APP CON ★ 126.4 379.95	GRANT COUNTY TOWER ★ 118.25 (CTAF) 0 257.8 (EAST) 128.0 257.8 (WEST)	GND CON 121.9	UNICOM 122.95
----------------	--	--	------------------	------------------



Remain
within 10 NM

TAUNT INT
MWH 5.7
RADAR

4000 MWH R-054	BATUM △
----------------------	----------------

