

VOR/DME MWH  
**115.0**  
Chan **97**

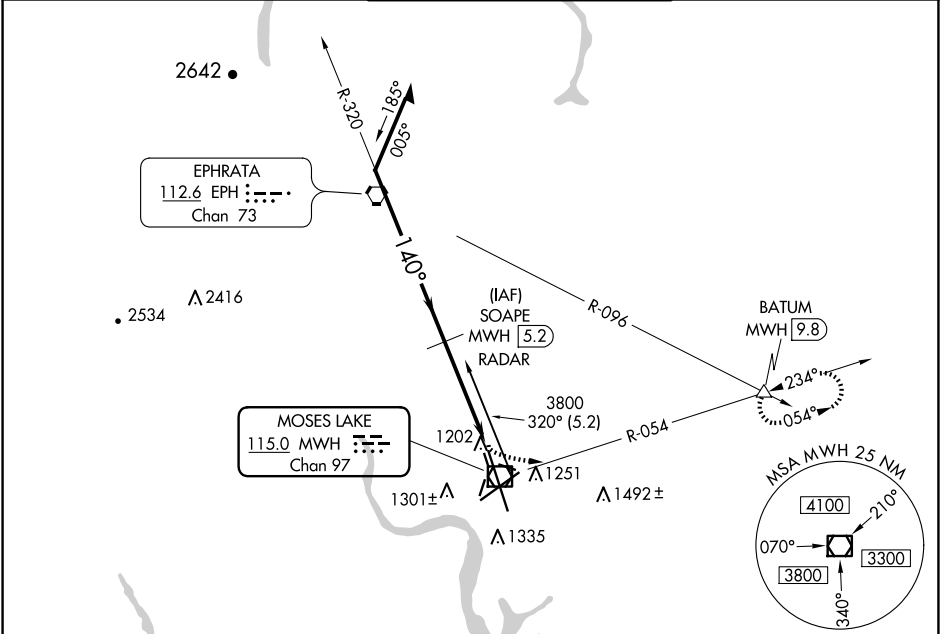
APP CRS  
**140°**

Rwy Idg **13503**  
TDZE **1169**  
Apt Elev **1189**

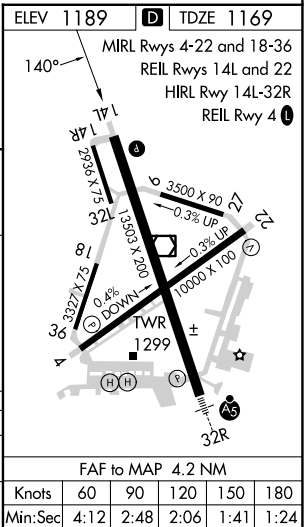
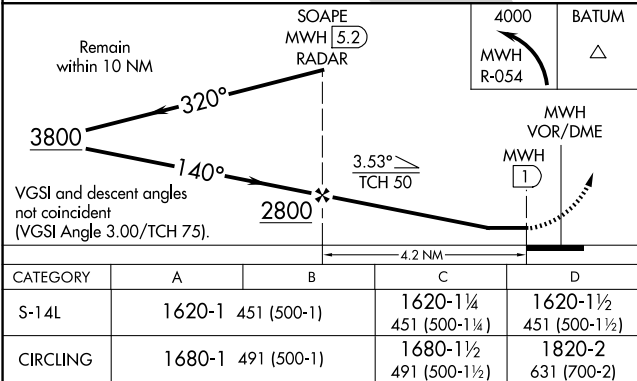
VOR-3 RWY 14L  
GRANT COUNTY INTL (MWH)

MISSED APPROACH: Climbing left turn to 4000 via MWH R-054 to BATUM INT/MWH 9.8 DME and hold.

ATIS <b>119.05</b>	GRANT COUNTY APP CON ★ <b>126.4 379.95</b>	GRANT COUNTY TOWER ★ <b>118.25 (CTAF) 257.8 (EAST)</b> <b>128.0 257.8 (WEST)</b>	GND CON <b>121.9</b>	UNICOM <b>122.95</b>
-----------------------	---	--	-------------------------	-------------------------



RADAR or DME REQUIRED



NW-1, 10 JUL 2025 to 07 AUG 2025

NW-1, 10 JUL 2025 to 07 AUG 2025