

APP CRS

216°

Rwy Idg

10000

TDZE

1166

Apt Elev

1189

RNAV (RNP) Z RWY 22

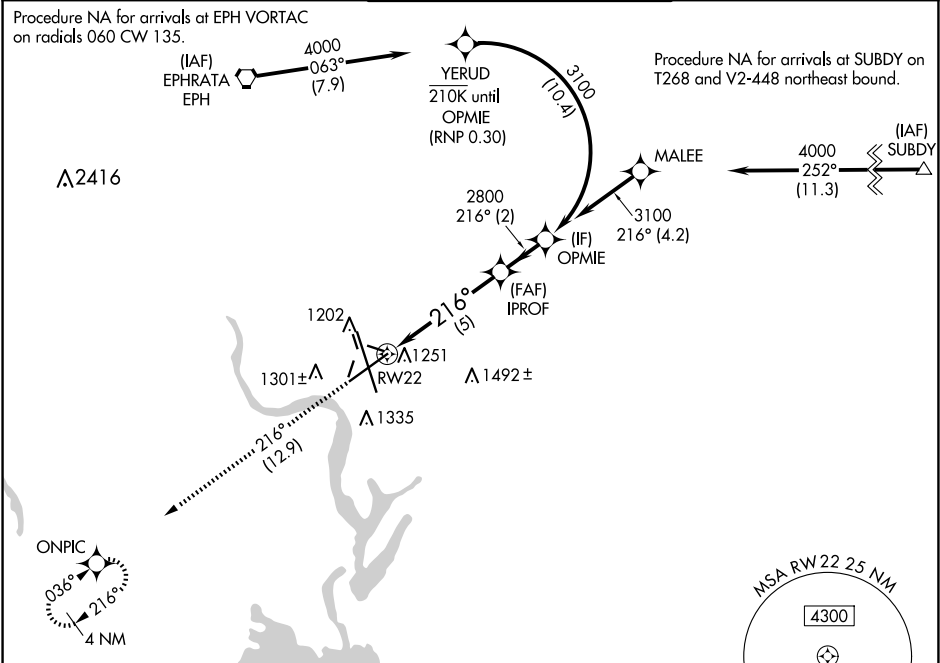
GRANT COUNTY INTL (MWH)

RNP AR APCH-GPS.

For uncompensated Baro-VNAV systems, procedure NA below  
-15°C or above 54°C.

MISSED APPROACH: Climb to 4000 on track 216°  
to ONPIC and hold.

ATIS 119.05	GRANT COUNTY APP CON ★ 126.4 379.95	GRANT COUNTY TOWER ★ 118.25 (CTAF) 0 257.8 (EAST) 128.0 257.8 (WEST)	GND CON 121.9	UNICOM 122.95
----------------	--	--	------------------	------------------



ELEV 1189

D

TDZE 1166

REIL Rwy 4

REIL Rws 14L and 22

HIRL Rwy 14L-32R

MIRL Rws 4-22 and 18-36

4000

ONPIC

tr 216°

OPMIE

IPROF

2800

3100

216°

2800

5 NM

2 NM

GP 3.00°

TCH 50

CATEGORY	A	B	C	D
RNP 0.10 DA	1421- <sup>3</sup> / <sub>4</sub>	255 (300- <sup>3</sup> / <sub>4</sub> )		
RNP 0.30 DA	1508-1	342 (400-1)		

AUTHORIZATION REQUIRED