

LOC FMWH 109.5	APP CRS 324°	Rwy Idg 13492 TDZE 1167 Apt Elev 1189
--------------------------	------------------------	--

ILS or LOC RWY 32R
GRANT COUNTY INTL (MWH)

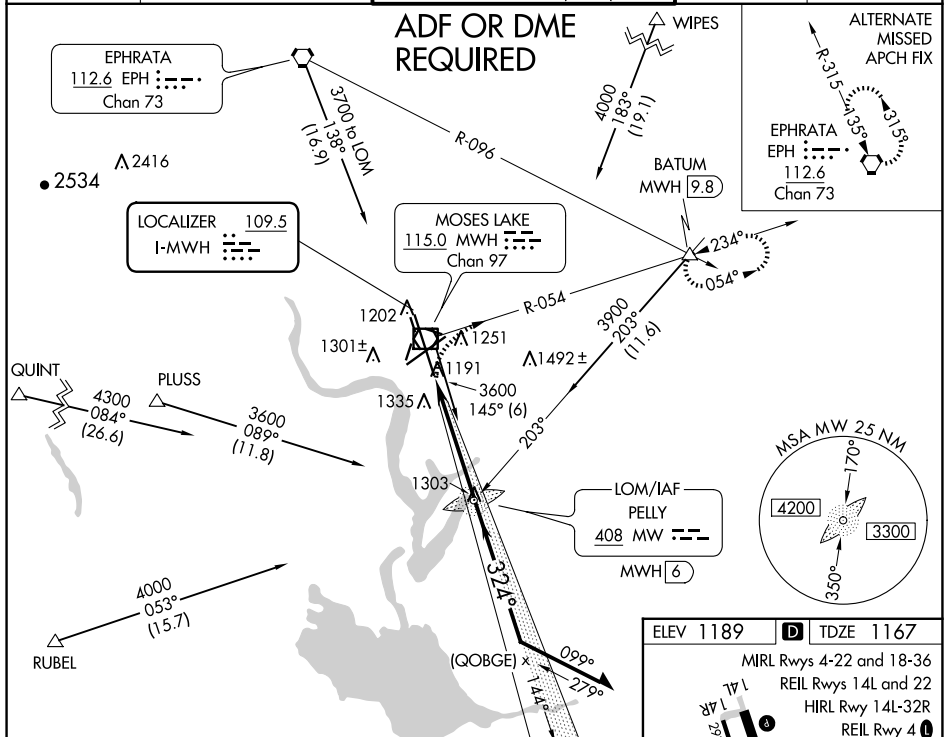
T When local altimeter setting not received, use Ephrata altimeter setting; increase all DA/MDA 40 feet and Circling Cat D visibility $\frac{1}{4}$ SM. **A**
For inop MALS/R, increase S-LOC 32R Cat D visibility to RVR 5000.
*RVR 1800 authorized with use of FD or AP or HUD to DA, NA when using Ephrata altimeter setting.

MALS



MISSED APPROACH: Climb to 1800, then climbing right turn to 4000 on MWH R-054 to BATUM INT/MWH 9.8 DME and hold, continue climb-in-hold to 4000.

ATIS 119.05	GRANT COUNTY APP CON ★ 126.4 379.95	GRANT COUNTY TOWER ★ 118.25 (CTAF) 0 257.8 (EAST) 128.0 257.8 (WEST)	GND CON 121.9	UNICOM 122.95
-----------------------	---	--	-------------------------	-------------------------



NW-1, 10 JUL 2025 to 07 AUG 2025

NW-1, 10 JUL 2025 to 07 AUG 2025