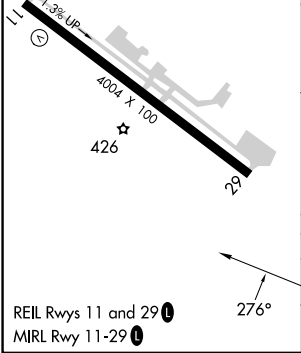
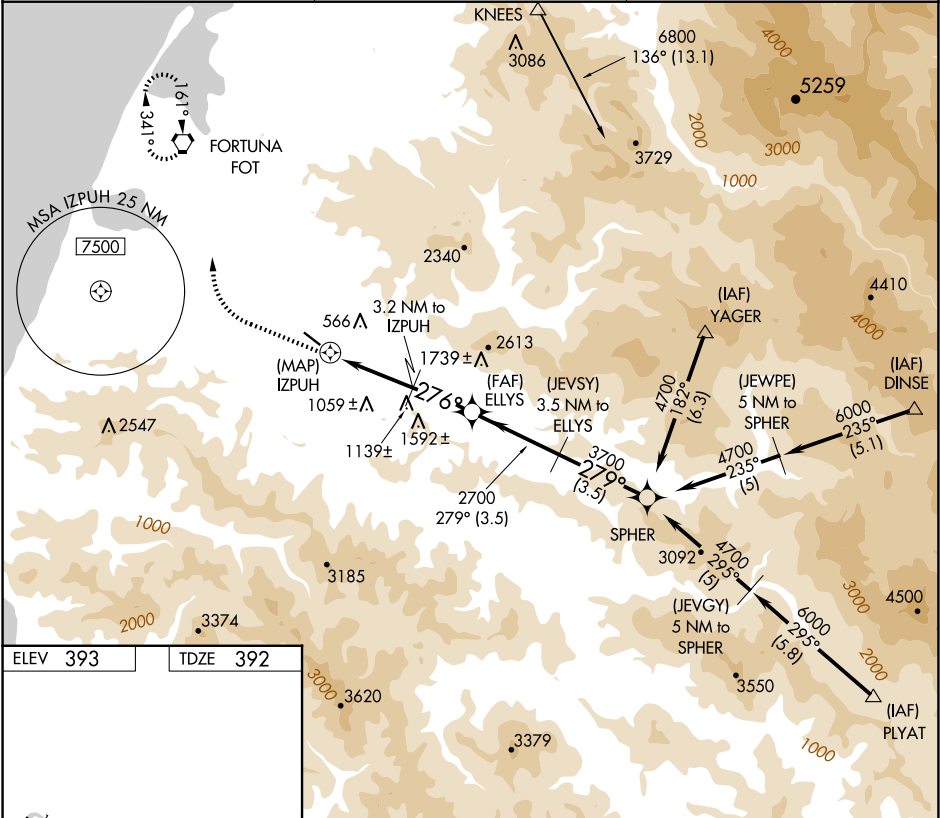


APP CRS	Rwy Idg	4004
276°	TDZE	392
	Apt Elev	393

GPS RWY 29
ROHNERVILLE (FOT)

<div>When local altimeter setting not received, use Arcata altimeter setting. Circling NA for Cat D north of Rwy 11-29.</div>	<div>MISSED APPROACH: Climb to 1500 then climbing right turn to 3000 direct FOT VORTAC and hold.</div>
---	--

AWOS-3 133.8	SEATTLE CENTER 124.85 306.3	CTAF 122.9
-----------------	--------------------------------	---------------



	1500	3000	FOT				
				IZPUH	ELLYS	(JEVSY) 3.5 NM to ELLYS	SPHER
				3.2 NM to IZPUH	3.2 NM to IZPUH	3.5 NM	3.5 NM
				276°	270°	279°	4700
				1840	2700	3700	Procedure Turn NA
				0.5	3.2 NM	2.3 NM	3.5 NM
CATEGORY	A	B	C	D			
S-29	1160-1 768 (800-1)	1160-1¼ 768 (800-1¼)	1160-2¼ 768 (800-2¼)	1160-2½ 768 (800-2½)			
CIRCLING	1160-1 767 (800-1)	1360-1½ 967 (1000-1½)	1720-3 1327 (1400-3)	1780-3 1387 (1400-3)			

SW-2, 10 JUL 2025 to 07 AUG 2025

SW-2, 10 JUL 2025 to 07 AUG 2025