
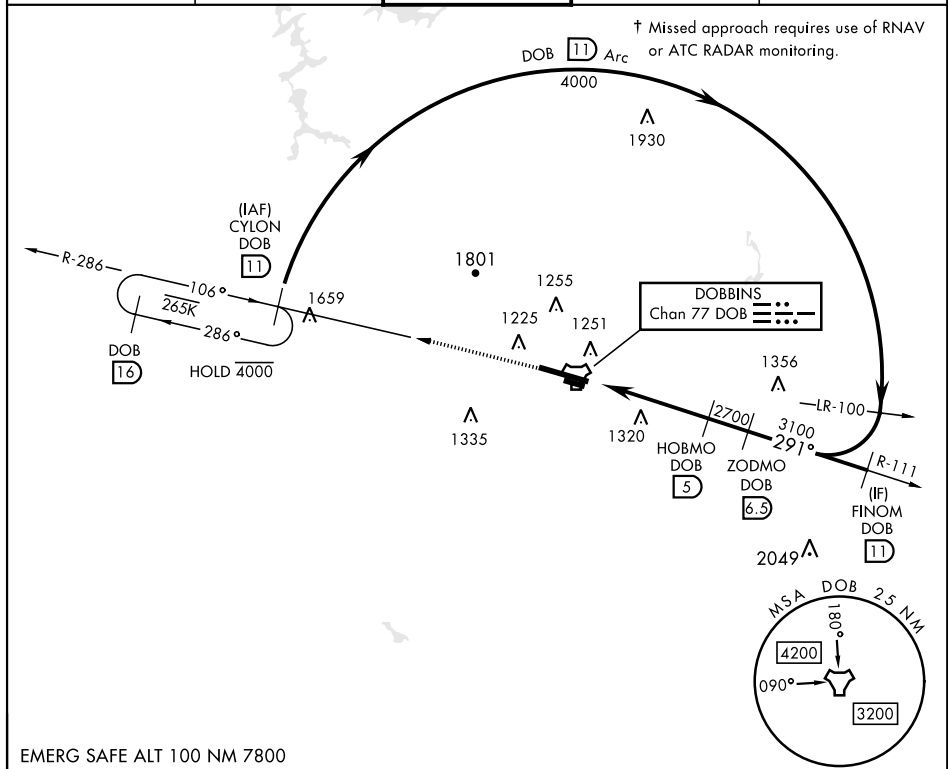


TACAN RWY 29

| | | | | | |
|---|--------------------|-------------------------|---|---|---|
| TACAN Chan 77 | DOB 291° | APCH CRS 291° | Rwy Idg 10,002 TDZE 1014 Arprt Elev 1069 | [USAF] | DOBBINS ARB (KMGE) |
| <p>▼ * When ALS inop, increase CAT AB RVR to 55 and vis to 1 mile, CAT CDE vis to 2 miles.</p> <p>** Circling not authorized N of Rwy 11-29 for CAT DE aircraft. Circling to assault strip not authorized.</p> | | | | <p>SALSF</p> <p>(A2) </p> | <p>† MISSED APPROACH: Climb to 3000 on DOB TACAN R-286 to CYLON and hold.</p> |

| | | | | |
|-----------------|--------------------------------|---------------------------|------------------------|-----|
| ATIS ★ 269.5 | ATLANTA APP CON 121.0 268.7 | TOWER ★ 120.75 370.875 | GND CON 125.3 275.8 | ASR |
|-----------------|--------------------------------|---------------------------|------------------------|-----|



EMERG SAFE ALT 100 NM 7800

Diagram illustrating the runway layout and surrounding terrain for the 11th Air Force Base. The diagram shows the runway (R-286) and taxiway (TCH 58) with various angles and distances. The runway is labeled with "CYLON" and "FINOM" (R-111). The taxiway is labeled "TACAN" and "ACUVI". The diagram also shows the "ASSAULT STRIP" and "TWR" (Tower). The diagram includes a scale bar (0.5 to 4.1 NM) and a table of runway data.

| CATEGORY | A | B | C | D | E |
|--------------|---------|---------------|-----------------------|-------------------------------|-------------------------------|
| S-29* | 1720/40 | 706 (700-3/4) | 1720-13/4 | 706 | 700-13/4 |
| C CIRCLING** | 1720-1 | 651 (700-1) | 1760-2 691 (700-2) | 1760-2 1/4 691 (700-2 1/4) | 1760-2 1/2 691 (700-2 1/2) |