

TACAN RWY 11

TACAN DOB  
Chan 77

APCH CRS  
106°

Rwy Ldg 10,002  
TDZE 1069  
Arpt Elev 1069

[USAF]

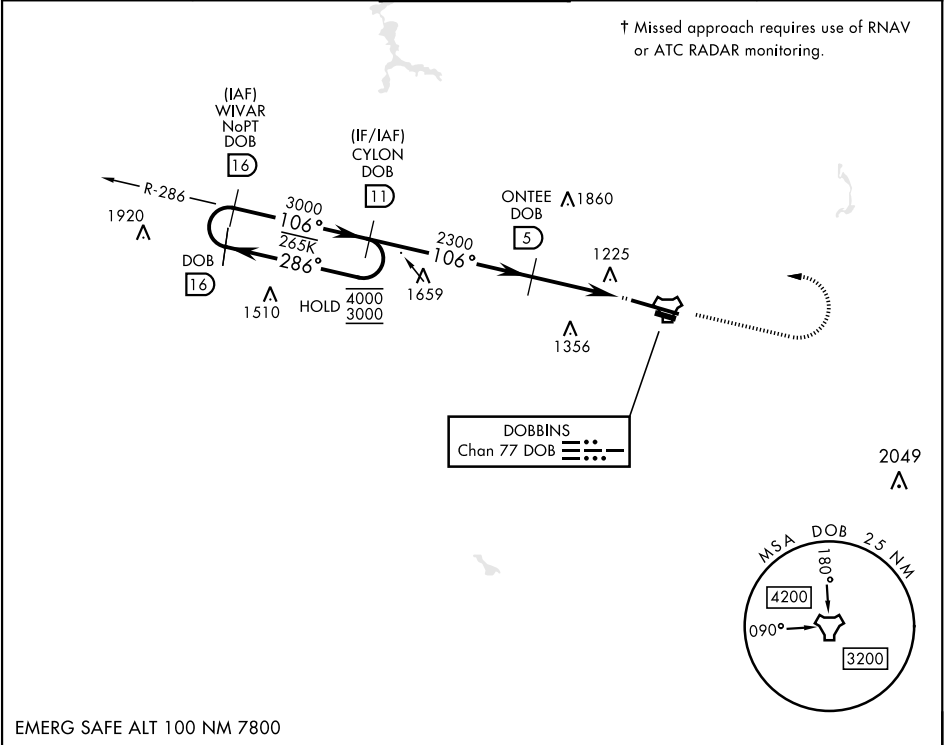
DOBBINS ARB (KMGE)

▼ \* When ALS inop, increase CAT AB RVR to 55 and vis to 1 mile, CAT CDE vis to 1½ miles.  
\*\* Circling not authorized N of Rwy 11-29 for CAT DE aircraft. Circling to assault strip not authorized.

ALSF-1  
A1

† MISSED APPROACH: Climb to 2000 on track 106°, then climbing left turn to 3000, intercept DOB TACAN R-286 to CYLON and hold.

ATIS ★ 269.5	ATLANTA APP CON 121.0 268.7	TOWER ★ 120.75 370.875	GND CON 125.3 275.8	ASR
-----------------	--------------------------------	---------------------------	------------------------	-----



EMERG SAFE ALT 100 NM 7800

2000  
tr 106°

3000

CYLON DOB  
11

ELEV 1069 | TDZE 1069

WIVAR 16 | CYLON 11

3000 | 106° | 3000 | 106°

ONTEE 5

2300

2.97° TCH 56

3.2 NM | 0.5 NM

KAMSE 1.8 | TACAN

2000  
tr 106°

3000

CYLON DOB  
11

CATEGORY	A	B	C	D	E
S-11*	1600/40 531 (600-¾)	1620-1 551 (600-1)	1760-2 691 (700-2)	1760-2¼ 691 (700-2¼)	1760-2½ 691 (700-2½)
CIRCLING**	1600-1 531 (600-1)	1620-1 551 (600-1)	1760-2 691 (700-2)	1760-2¼ 691 (700-2¼)	1760-2½ 691 (700-2½)

HIRL Rwy 11-29  
REIL Rwy 11 and 29

10,002 x 300

0.8% DOWN

3495 x 60 290°

0.8% DOWN

ASSAULT STRIP

SE-4, 10 JUL 2025 to 07 AUG 2025

SE-4, 10 JUL 2025 to 07 AUG 2025