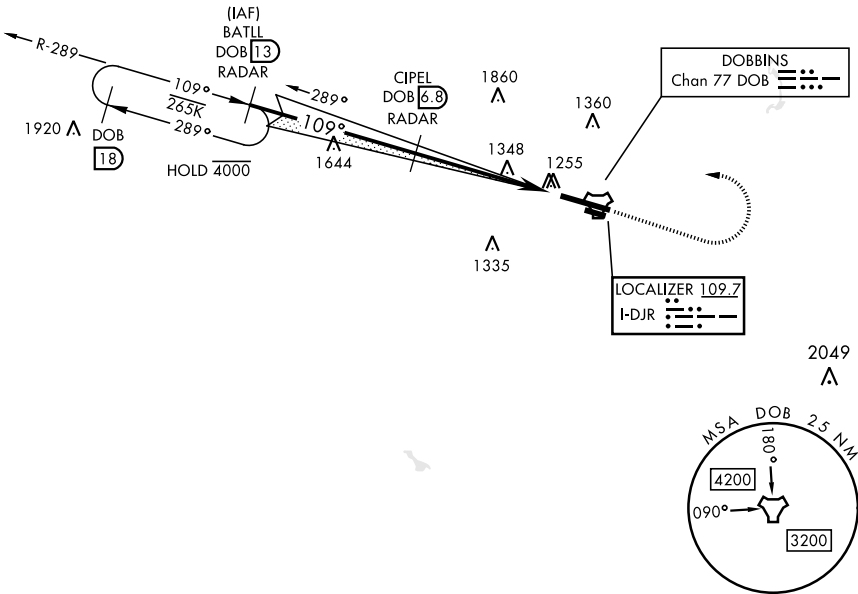


ILS or LOC RWY 11

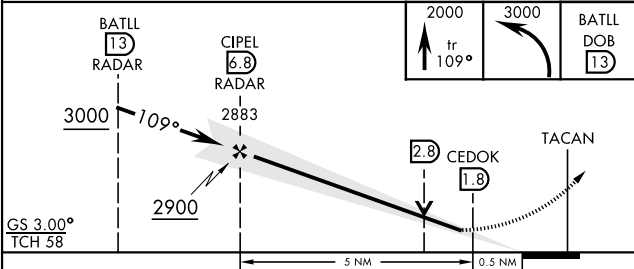
LOC I-DJR <b>109.7</b>	APCH CRS <b>109°</b>	Rwy Idg <b>10,002</b> TDZE <b>1069</b> Arpt Elev <b>1069</b>	[USAF]	DOBBINS ARB (KMGE)	
TACAN or RADAR required.			ALSIF-1 	† MISSED APPROACH: Climb to 2000 track 109°, then climbing left turn to 3000, intercept the DOB TACAN R-289 to BATLL and hold.	
* When ALS inop, increase RVR to 55 and vis to 1 mile. ** When ALS inop, increase CAT AB RVR to 55 and vis to 1 mile, CAT CDE vis to 2 miles.					
ATIS ★ <b>269.5</b>	ATLANTA APP CON <b>121.0 268.7</b>	TOWER ★ <b>120.75 370.875</b>	GND CON <b>125.3 275.8</b>	ASR	

\*\*\* Circling not authorized N of Rwy 11-29 for CAT DE aircraft,  
Circling to assault strip not authorized.

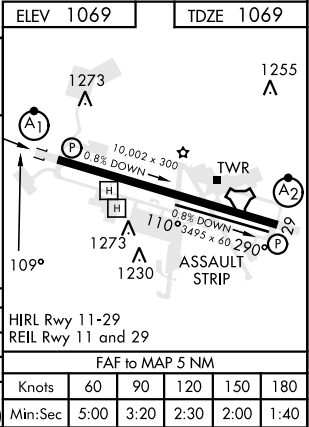
† Missed approach requires use of RNAV  
or ATC RADAR monitoring.



EMERG SAFE ALT 100 NM 7800



CATEGORY	A	B	C	D	E
S-ILS 11*	1431/40		362	(400-¾)	
S-LOC 11**	1600/40	531 (600-¾)	1600/55	531	(600-1)
***	1600-1	1620-1	1760-2	1760-2¼	1760-2½
CIRCLING	531 (600-1)	551 (600-1)	691 (700-2)	691 (700-2¼)	691 (700-2½)



ILS or LOC RWY 11

SE-4, 10 JUL 2025 to 07 AUG 2025

SE-4, 10 JUL 2025 to 07 AUG 2025