
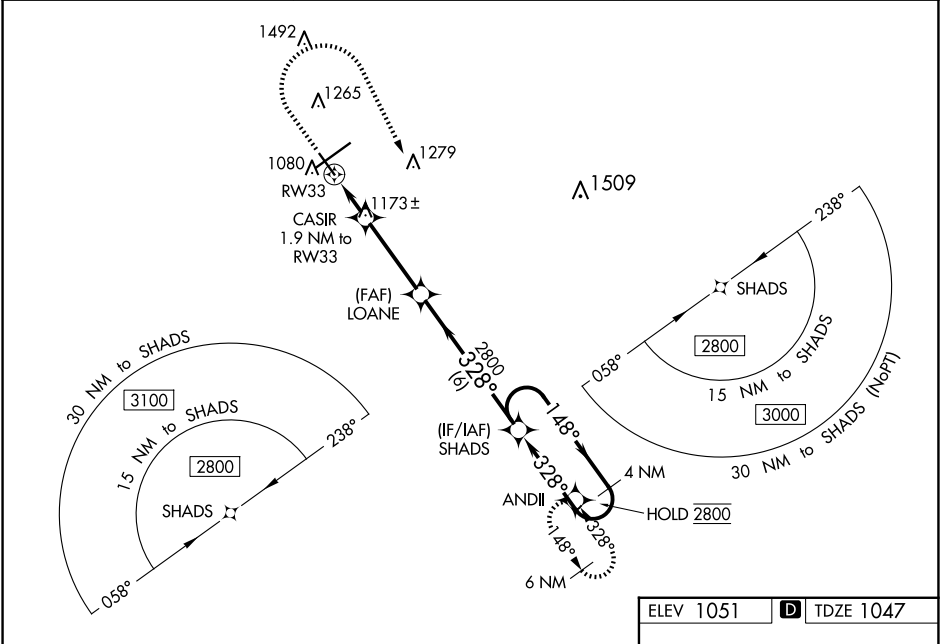


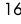
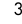
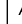

WAAS CH 77545 W33A	APP CRS 328°	Rwy ldg TDZE Apt Elev
		5498 1047 1051

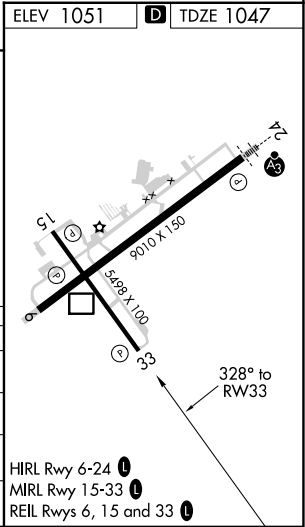
RNAV (GPS) RWY 33
SPRINGFIELD/BECKLEY MUNI (SGH)

RNP APCH - GPS.		MISSED APPROACH: Climb to 1600 then climbing right turn to 3000 direct ANDII and hold.
	Rwy 33 helicopter visibility reduction below 3/4 SM NA. For uncompensated Baro-VNAV systems, LNAV/VNAV NA below -17°C or above 54°C.	

AWOS-3PT 134.975	COLUMBUS APP CON 118.85 269.275	UNICOM 122.95 (CTAF) 0
----------------------------	---	----------------------------------



1600		3000	ANDII	LOANE		SHADS	4 NM Holding Pattern
				CASIR 1.9 NM to RW33		2800	1480
		1.1 NM to RW33	0.8 NM	3.4 NM	6 NM	2800	GP 3.05° TCH 37
RW33		1700	2800				
CATEGORY	A	B	C	D			
LPV DA	1349-7/8		302 (300-7/8)				
LNAV/VNAV DA	1350-7/8		303 (300-7/8)				
LNAV MDA	1440-1	393 (400-1)	1440-1 1/8	393 (400-1 1/8)			
CIRCLING	1480-1 429 (500-1)	1580-1 529 (600-1)	1580-1 1/2 529 (600-1 1/2)	1620-2 569 (600-2)			



EC-2, 10 JUL 2025 to 07 AUG 2025

EC-2, 10 JUL 2025 to 07 AUG 2025