


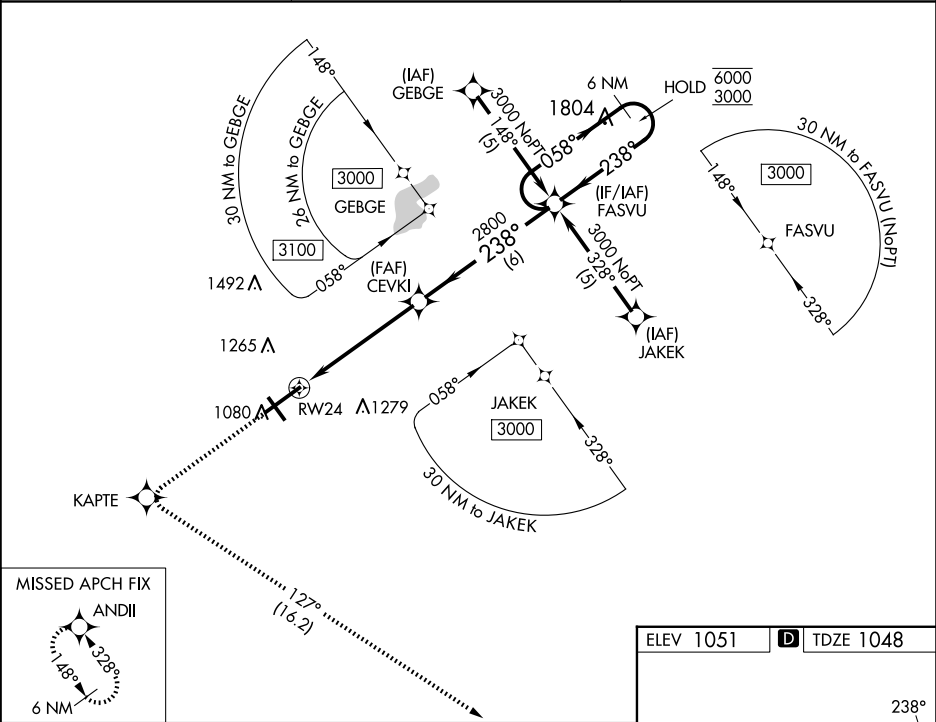


WAAS CH 97615 W24A	APP CRS 238°	Rwy Idg 9009 TDZE 1048 Apt Elev 1051
--	------------------------	---

RNAV (GPS) RWY 24

SPRINGFIELD/BECKLEY MUNI (SGH)

RNP APCH - GPS.		SSALR 	MISSED APPROACH: Climb to 3000 direct KAPTE and left turn on track 127° to ANDII and hold.
 	For uncompensated Baro-VNAV systems, LNAV/VNAV NA below -17°C or above 54°C. For inop ALS, increase LNAV/VNAV all Cats visibility to 1 SM.		
AWOS-3PT 134.975	COLUMBUS APP CON 118.85 269.275	UNICOM 122.95 (CTAF) 0	



3000		KAPTE	ANDII	VGSI and RNAV glidepath not coincident (VGSI Angle 3.00/TCH 60).		6 NM
				Holding Pattern		
1.5 NM to RW24		CEVKI	FASVU	GP 3.00° TCH 54		
RW24		2800	2800	058° → 6000		
1.5 NM		3.8 NM	6 NM	← 238° 3000		
CATEGORY		A	B	C	D	
LPV DA		1248-½		200 (200-½)		
LNAV/VNAV DA		1398-⅝		350 (400-⅝)		
LNAV MDA		1580-½	532 (600-½)	1580-1	532 (600-1)	
CIRCLING		1580-1	529 (600-1)	1580-1½ 529 (600-1½)	1620-2 569 (600-2)	

