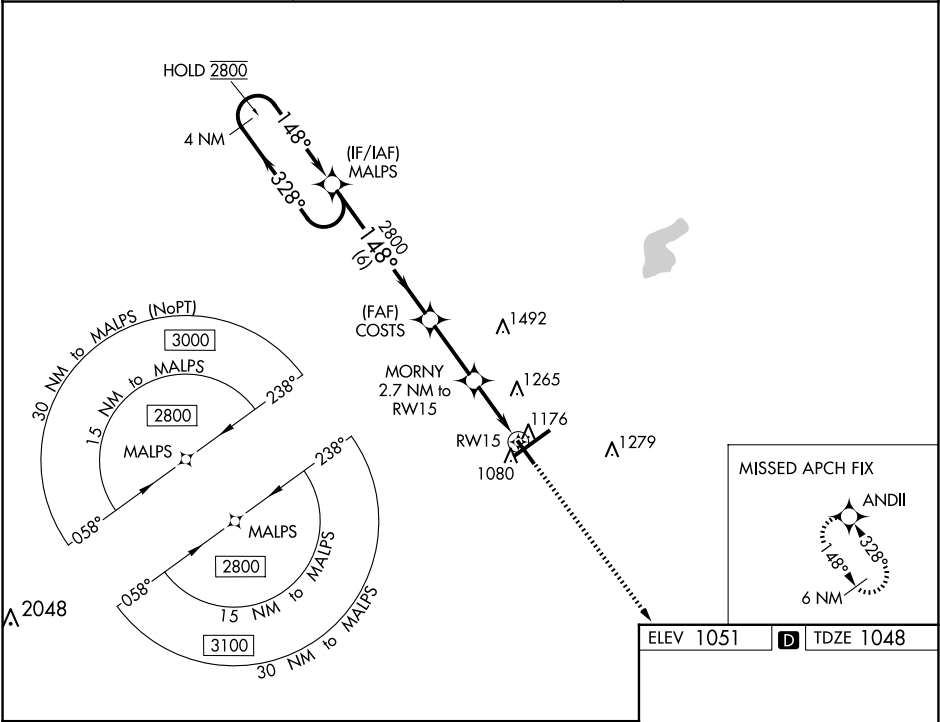


WAAS CH 70345 W15A	APP CRS 148°	Rwy ldg TDZE Apt Elev	5498 1048 1051
--	------------------------	-----------------------------	---

RNAV (GPS) RWY 15
SPRINGFIELD/BECKLEY MUNI (SGH)

RNP APCH - GPS.	MISSED APPROACH: Climb to 3000 direct ANDII and hold.
Rwy 15 helicopter visibility reduction below 3/4 SM NA. For uncompensated Baro-VNAV systems, LNAV/VNAV NA below -17°C or above 54°C.	

AWOS-3PT 134.975	COLUMBUS APP CON 118.85 269.275	UNICOM 122.95 (CTAF) 0
----------------------------	---	----------------------------------



4 NM Holding Pattern		MALPS	COSTS	3000	ANDII
2800 ← 328°		2800	MORN 2.7 NM to RW15	1.1 NM to RW15	
GP 3.00° TCH 36		2800	1940	RW15	
6 NM		2.7 NM	1.6 NM	1.1 NM	
CATEGORY	A	B	C	D	
LPV DA	1298-3/4 250 (300-3/4)				
LNAV/ VNAV DA	1337-7/8 289 (300-7/8)				
LNAV MDA	1440-1	392 (400-1)	1440-1 1/8	392 (400-1 1/8)	
CIRCLING	1480-1 429 (500-1)	1580-1 529 (600-1)	1580-1 1/2 529 (600-1 1/2)	1620-2 569 (600-2)	

HIRL Rwy 6-24 0

MIRL Rwy 15-33 0

REIL Rws 6, 15 and 33 0

EC-2, 10 JUL 2025 to 07 AUG 2025

EC-2, 10 JUL 2025 to 07 AUG 2025