

# RNAV (GPS) RWY 7

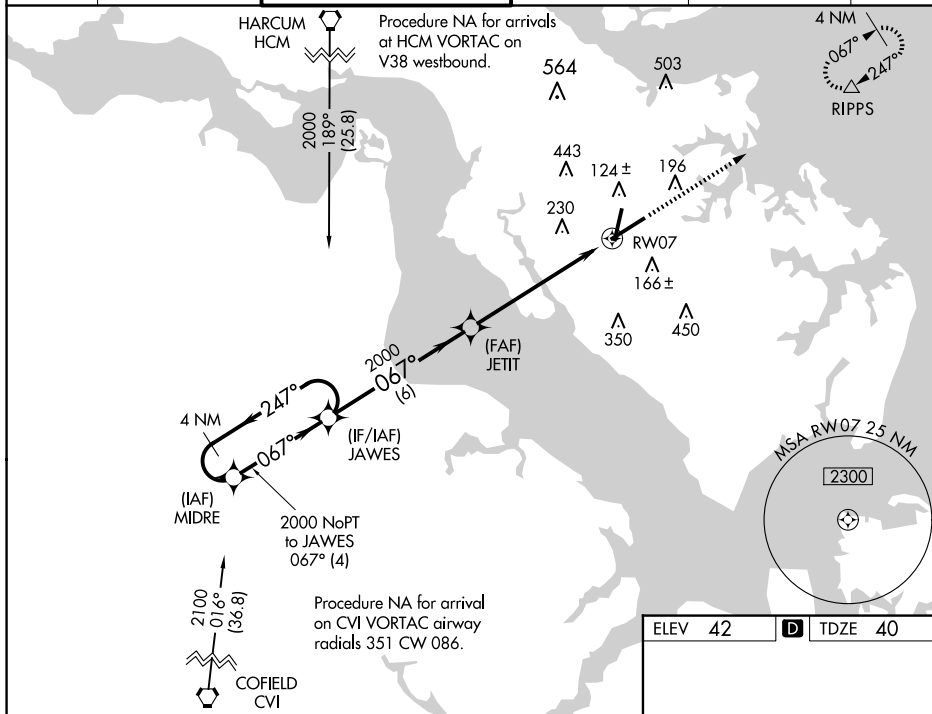
## NEWPORT NEWS/WILLIAMSBURG INTL (PHF)

**T** For uncompensated Baro-VNAV systems, LNAV/VNAV NA below -11°C or above 54°C.

**A** For inop MALSR, increase LNAV/VNAV all Cats visibility to 1 3/4.




**MISSED APPROACH:**  
Climb to 2500 direct  
RIPPS and hold.

UNICOM  
122.95

## References

\* 1.2 NM  
to RW0



--	--

---

4

--	--

--	--

TDZE 40

